

# SCHOOLFOOD4CHANGE

## Stakeholder maps and delegate suggestions for 12 national policy dialogues

**DELIVERABLE 6.15**

WWF Sweden

22 February 2024



<b>Project acronym</b>	SF4C
<b>Project number</b>	101036763
<b>Version</b>	1.0
<b>WP</b>	6 – Outreach, Replication and International Cooperation
<b>Deliverable</b>	D6.15
<b>Due date</b>	Month 24 – December 2023
<b>Dissemination level</b>	Public
<b>Deliverable lead</b>	WWF Sweden
<b>Authors</b>	Backlund, Ulrika; WWF Sweden, <a href="mailto:ulrika.backlund@wwf.se">ulrika.backlund@wwf.se</a>
<b>Peer-reviewed by</b>	Adkins, Rebekka; WWF Germany, <a href="mailto:rebekka.adkins@wwf.de">rebekka.adkins@wwf.de</a> Beelen, Katharina; Rikolto Belgium, <a href="mailto:katharina.beelen@rikolto.org">katharina.beelen@rikolto.org</a> Ochoa Vidal, Amalia; ICLEI Europe <a href="mailto:Amalia.ochoa@iclei.org">Amalia.ochoa@iclei.org</a>
<b>Abstract</b>	This report compiles and presents the stakeholder maps and suggested delegate lists for the national policy dialogues and/or workshops that will take place in 12 European countries within the SchoolFood4Change project. The stakeholder mapping and identification of relevant stakeholder representation was done by the National Lead Partner organisations in each of the 12 countries, sometimes together with project cities. The report also briefly summarises the coordination process and support that was given to partners by WWF Sweden during this task.
<b>Keywords</b>	Multi-stakeholder; policy dialogues; national policy dialogues; multi-stakeholder workshops; policy workshops; stakeholder mapping; stakeholder maps; delegate suggestions; key stakeholders.

## TABLE OF CONTENTS

<b>Executive Summary .....</b>	<b>4</b>
<b>1.1 Process of coordination and support.....</b>	<b>5</b>
<b>1.2 Results .....</b>	<b>6</b>
Austria .....	8
Belgium.....	14
Czech Republic.....	17
Denmark.....	20
Estonia.....	23
France.....	29
Germany, Essen.....	33
Germany, Nuremberg.....	39
Hungary.....	44
Italy.....	50
Slovakia.....	55
Spain.....	58
Sweden.....	63

## EXECUTIVE SUMMARY

To prepare all contributing project National Lead Partners (NLPs) for the upcoming task of organising and performing national policy dialogues/workshops (milestone 25) this deliverable, focused on mapping school food system stakeholders and identifying potential and relevant dialogue representatives, was planned and coordinated by WWF Sweden.

13 unique and context sensitive stakeholder maps were developed by the SchoolFood4Change (SF4C) NLPs. These maps capture the multi-stakeholder environment, relevant for the respective national, regional or local school food systems, depending on the NLPs assessment which level will yield the most impact on policies. The maps are all developed by representatives of the national organisations:

- City of Vienna, National Lead Partner Austria
- Rikolto, National Lead Partner Belgium
- Skutečně zdravá škola, National Lead Partner Czech Republic
- City of Copenhagen, National Lead Partner Denmark
- Stockholm Environment Institute Tallinn, National Lead Partner Estonia
- Eating City/Risteco, National Lead Partner France
- Speiseräume, National Lead Partner Germany
- Business Economics Science Education Foundation, National Lead Partner Hungary
- Fondazione Ecosistemi, National Lead Partner Italy
- Skutočne zdravá škola, National Lead Partner Slovakia
- Mensa Civica, National Lead Partner Spain
- WWF Sweden, National Lead Partner Sweden.

In addition to the stakeholder maps and prioritization of stakeholder representatives, each country was also asked to prepare a list of the delegates identified which they plan to invite to their national policy dialogue. Due to splitting the process of organising a policy dialogue and handing in the deliverable beforehand, delegate lists may differ from the actual participants which finally attend the events/meetings.

These lists are a 'work in progress' that have supported NLPs in planning and preparation their multi-stakeholder policy processes and workshops.

## **1.1 PROCESS OF COORDINATION AND SUPPORT**

The process of coordinating and preparing the engagement in national policy dialogues has mainly focused on two aspects:

1. Providing a digital meeting venue for NLPs, and other relevant project partners, to get better oriented and acquainted with the task as well as exchange experiences, strategies, good practices and failures
2. The development of a SF4C toolkit for national policy dialogues, with supportive or guiding materials for the different stages in organising such an event, templates etc.

Three digital meetings focused on the coordination of the national policy dialogues have taken place.

- 7 September 2022: an informative and preparative meeting was held where the task and timeline was explained and partners were able to ask questions, come up with ideas and explain their needs and wishes for support and coordination. WWF Sweden also held bilateral calls during October and November 2022 with all NLPs to better understand their context specific school food systems and relevant policy asks to focus workshops on. This gave input to the development of the SF4C Policy Opportunity Brief "School meals as a policy area with huge potential" (D6.14, delivered in month 18).
- 14 February 2023: a follow-up meeting with NLPs and other interested project partners was held where a draft SF4C Toolkit for national policy dialogues was presented. The toolkit contains a policy-opportunity brief template to be translated and adopted by each project country if needed, a stakeholder mapping and delegate suggestion template and guidance material, a concept note where the aim and method for the policy dialogues were explained, a mutual presentation of the project, tips on engaging youth (as a priority stakeholder group) in the dialogues, a national action plan template, a proposed evaluation survey to share with dialogue participants afterwards, sign-in/sign-out sheets etc. For those NLPs who could not attend, a recording of the meeting

was made available. Input on the drafted material was collected and the toolkit was finalized and shared with all partners in April 2023.

- 27 September 2023: A digital exchange of policy dialogue experiences was arranged to share experiences gained so far, from Italy and Sweden that both performed a physical national policy dialogue in different formats. Both successful and less successful lessons were shared which could inspire and help other NLPs in planning their upcoming national policy dialogues. Sharing experiences between partners also makes the partnership stronger and builds our collective intelligence.
- 21 February 2024: digital exchange where partners from Czech Republic and Belgium shared their experiences from the multi-stakeholder processes and the resulting action plans.

A fourth meeting will take place in February 2024 and a fifth and final meeting will conclude the meeting series during October-November 2024.

## 1.2 RESULTS

Attached to this report are all national stakeholder maps as well as suggested delegates. For privacy reasons and in compliance with data protection, the names of identified individuals have been excluded from this deliverable.

The template for visual stakeholder maps, provided by WWF Sweden, clearly indicates which stakeholder segments or stakeholder groups should be prioritised to include in the upcoming national policy dialogues. According to the project plan these stakeholder segments were youth, farmers, small and medium-sized enterprises (SMEs) and young entrepreneurs in addition to policymakers. Despite the provided written and oral guidance and instructions, the result of the stakeholder maps and delegate lists clearly shows that some partners have not prioritized participation from these stakeholders when preparing for the policy dialogues. This might have different reasons, one being that the dialogue with farmers and SME's might already be happening within the framework of the procurement market dialogues, coordinated by work package 5.

The effects of not prioritizing previously mentioned stakeholder segments will be discussed and analysed together with the NLPs moving forward.

Some NLPs operate on a local/regional level, e.g. the capital cities of Vienna and Copenhagen. These partners decided to focus their stakeholder mappings on the local government level, matching their ambition to hold the policy dialogue at this level where relevant policy decisions are handled.

Other countries school feeding programs are run and legislated on a regional and/or local state level - e.g. in Germany. The German NLP therefore decided to have two separate policy dialogues, one for each region involved in SF4C since relevant policies are shaped on a regional level rather than a national one. Thus, the German partners carried out their stakeholder mapping on a local level (one stakeholder map for each implementing city), including two suggested delegates lists. This work has been done in close collaboration with the two SF4C city partners: Essen and Nuremberg.

To conclude, the work for this deliverable has further highlighted that political structures and backgrounds differ greatly in the 12 countries represented in SF4C. Therefore, it was important that the NLPs were able to customise the stakeholder maps to their country-specific contexts, so that the resulting dialogues yield the greatest possible effect. The process of developing multi-stakeholder maps and identifying suggested delegates for the dialogues has allowed partners to get concrete in their planning and preparation of multi-stakeholder policy dialogues and workshops. It has brought them one step further in collaborating with relevant stakeholders to improve national policies and processes in support of the SF4C triple approach, including vertical integration efforts and national action plans, to enable nation wide SF4C actions, also beyond the duration of the project.



**City of Vienna – Environmental Protection/NLP for Austria**

**D6.15 Stakeholder maps and delegate suggestions for national policy dialogues**



	Role	Organisation	Stakeholder segment
1	Federal Minister of Education	Federal Ministry of Education	Politicians
2	Federal Minister for Health and Women's Affairs	Federal Ministry for Health and Women's Affairs	Politicians
3	Federal Minister of Agriculture, Forestry, Environment and Water Management	Federal Ministry of Agriculture, Forestry, Environment and Water Management	Politicians
4	Member of National Nutrition Commission	Federal Ministry for Health and Women's Affairs	Authorities
5	Executive City Councillor (Environment)	City of Vienna	Politicians
6	Executive City Councillor (Education)	City of Vienna	Politicians
7	Executive City Councillor (Health)	City of Vienna	Politicians
8	Head of department	City of Vienna – Environmental Protection (MA 22)	Governmental departments
9	Head of department	City of Vienna Procurement and Logistics (MA 54)	Governmental departments
10	Head of department	City of Vienna – Schools (MA 56)	Governmental departments
11	Head of department	City of Vienna - Economic Affairs, Labour and Statistics (MA 23)	Governmental departments
12	Head of department	City of Vienna – Kindergartens (MA 10)	Governmental departments
13	Specialist Inspector	Federal Board of Education	Governmental department
14	Managing Director	Viennese health Promotion (WiG)	Governmental department
15	Health Officer	Viennese health Promotion (WiG)	Governmental department
16		City of Vienna – Kindergartens (MA 10)	Governmental department
17		City of Vienna – Schools (MA 56)	Governmental department

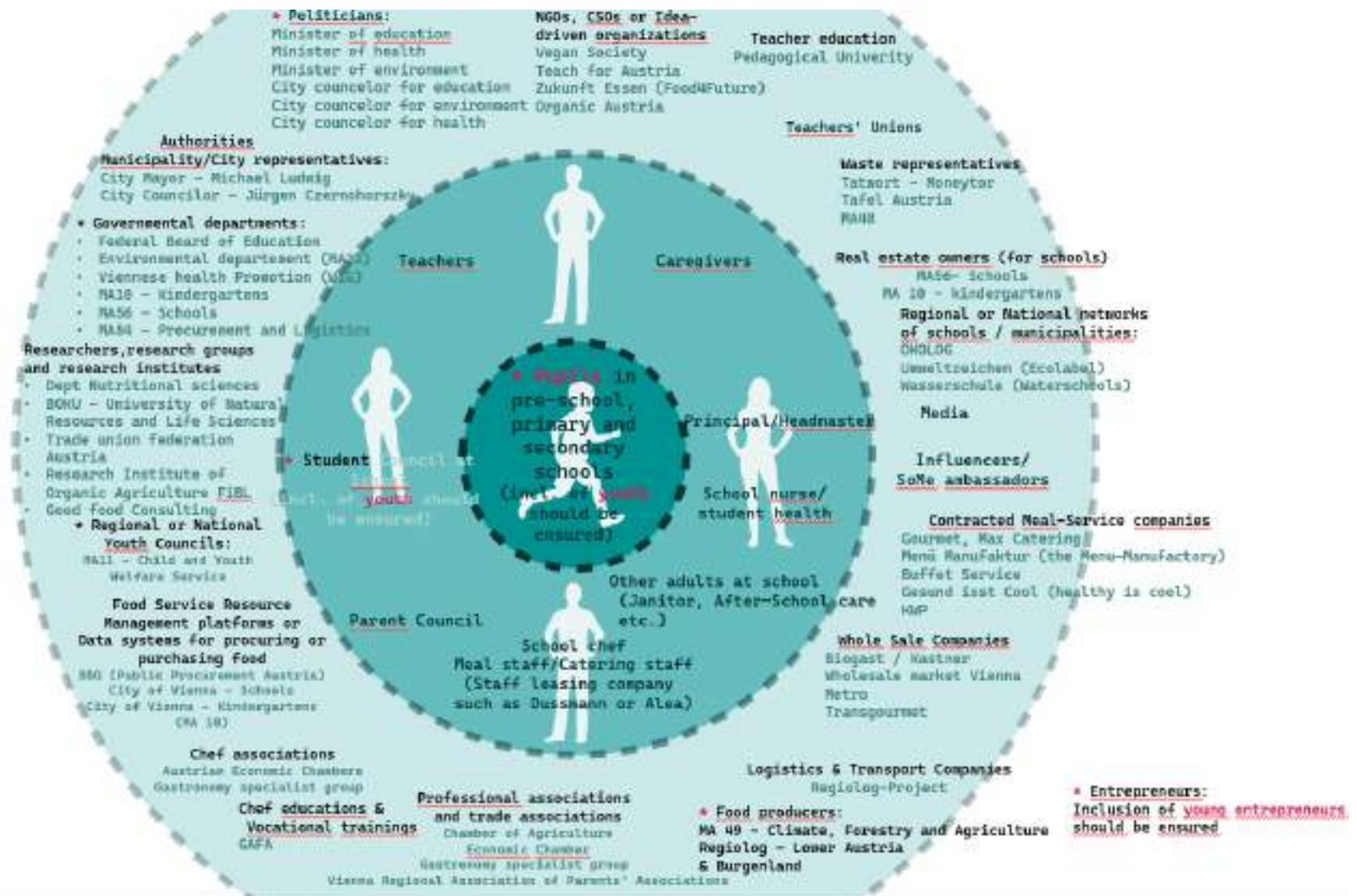
18	Chamber Director	Agriculture Chamber Vienna	
19	Marketing & PR Farm2School Twinning	Agriculture Chamber Vienna	
20	Head of department	City of Vienna – Climate, Forestry and Agriculture (MA 49)	Governmental departement
21	Business Unit Manager “Wiener Gusto”	City of Vienna – Climate, Forestry and Agriculture (MA 49)	Governmental departement
22	Head of department	City of Vienna – Climate, Forestry and Agriculture (MA 49)	Governmental departement
23	Managing Director	“Ja zu Nah ” yes to local - Regional Food Cooperation GmbH	
24	Managing Director Education & Care Catering	GMS Gourmet GmbH	Catering
25	Managing Director/ Operations manager	MAX-Catering GmbH	Catering
26	Head of Michl’s Catering	Vienna Work -integrative companies and training GmbH	Catering
27	Managing Director	SV (Austria) GmbH	Catering
28	Team and Sales Manager Social Catering	Die Menü-Manufaktur GmbH (the Menu-Manufactory)	Catering
29	Head of Gastronomic Management	Kuratorium Wiener Pensionisten-Wohnhäuser (KWP) (Board of Trustees Vienna Pensioners - Residential Homes)	Catering
30	Specialist consultant - Gastronomy	BIOGAST GesmbH (Oranic Gastronomy)	Wholesale
31		Vienna Nutrition Council	NGO
32	Managing Director	Vegan Society	NGO
33	Chairperson	Zukunft Essen – Gutes Schulessen für alle! (Food4Future - Good school meals for all!)	NGO

34		FIBL	Science
35	Deputy – Institute of Waste Management and Circularity (ABF-BOKU) / Scientific Researcher	BOKU - University of Natural Resources and Life Sciences	Science
36		Gut.essen Consulting (good.food)	Food Consultant
37	Chairman	CityFarm	NGO & Science
38		BioAustria (Organic Austria)	NGO
39	Managing Director	Teach for Austria	NGO
40	Specialist Board of Directors	GAFA (Catering and Gastronomic College)	Chef education & Vocational trainings
41	Vocational trainer	GAFA (Catering and Gastronomic College)	Chef education & Vocational trainings
42	Specialist Group Managing Director	Austrian Economic Chambers	Gastronomy specialist group
43	Managing Director	Tatwort	Waste representatives
44	Projectmanager	Tatwort	Waste representatives
45	Managing Director	Tafel Austria	Waste representatives
46	Head of Forum "Österreich isst regional"/ Projectmanager	BBG (Public Procurement Austria)	Food Service Resource Management
47	Head of Procurement	Wiener Gesundheitsverbund (Vienna Health Association)	Procurement (Hospital)
48	TBI	Vienna Regional Association of Parents' Associations	Caregivers

#### School specific Delegates:

	Role	Organization	Stakeholder segment
1	Director	BRG III Boerhaavegasse (Gymnasium)	School
2	Head of Action Group/ teacher	BRG III Boerhaavegasse (Gymnasium)	School
3	Director	BRG Simonsgasse(Gymnasium)	School
4	Head of Action Group/ Teacher	BRG Simonsgasse (Gymnasium)	School
5	Director	VS Gallileigasse (Elementary school)	School

6	Head of Action Group/ Freizeitpädagoge	VS Gallileigasse (Elementary school)	School
7	Director	VS Halirschgasse (Elementary school)	School
8	Head of Action Group/ Teacher	VS Halirschgasse (Elementary school)	School
9	Head of Action Group/ Director	VS Klenaugasse (Elementary school)	School
10	Director	VS Odoakergasse (Elementary school)	School
11	Director	GTVS Bildungscampus Sonnenwendviertel (Elementary school)	School
12	Head of Action Group/ Teacher	GTVS Bildungscampus Sonnenwendviertel (Elementary school)	School
13	Director	VS Campus Donaufeld (Elementary school)	School
14	Director	VS Priessnitzgasse (Elementary school)	School
15	Head of Action Group/ Teacher	VS Priessnitzgasse (Elementary school)	School
16	Director	VS Diesterweggasse (Elementary school)	School
17	Head of Action Group/ Teacher	VS Diesterweggasse (Elementary school)	School
18	Director	VS Oberlaa (Elementary school)	School
19	Director	VS Julius-Meinl Schule (Elementary school)	School
20	Director	GRG 23 (Gymnasium)	School
21	Head of Action Group/ Teacher	GRG 23 (Gymnasium)	School
22	Director	Schule Canavesegasse (Elementary school)	School



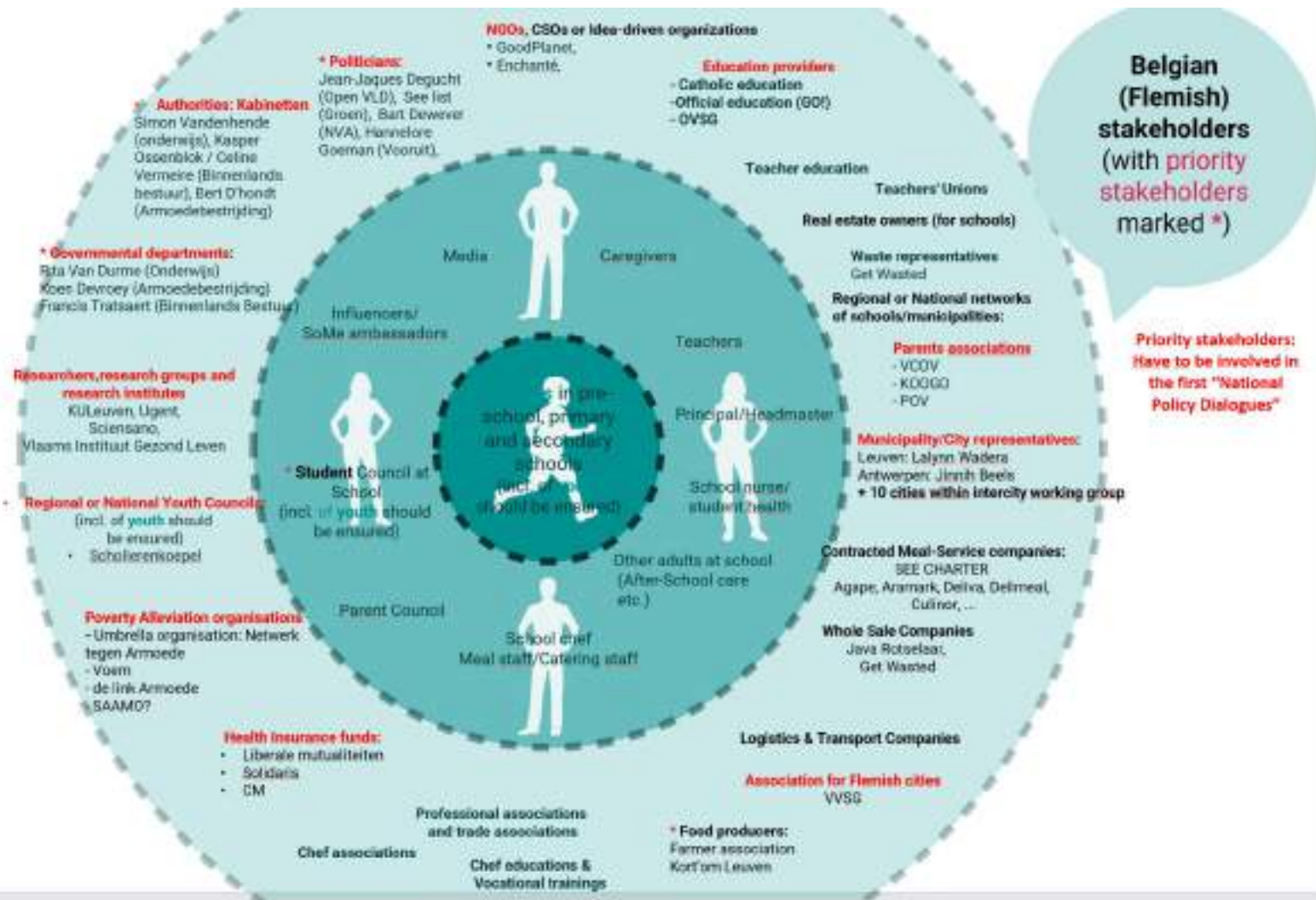


ANASTASIA LUNDQVIST

## Rikolto /NLP for Belgium

**D6.15 Stakeholder maps and delegate suggestions for national policy dialogues**

	<b>Role: represents</b>	<b>Organization</b>	<b>Stakeholder segment</b>
<b>1</b>	Official education organised by the Flemish Community	<i>GO! Onderwijs van de Vlaamse Gemeenschap</i> (official education organised by the Flemish Community)	Educational providers
<b>2</b>	Official education organised by the Flemish Community	<i>GO! Onderwijs van de Vlaamse Gemeenschap</i> (official education organised by the Flemish Community)	Educational providers
<b>3</b>	GP projects in >1.000 schools	<i>Good Planet</i>	Civil society organisations
<b>4</b>	Umbrella organization for poverty alleviation organizations	<i>Netwerk tegen Armoede</i> (Network of Flemish organisations against poverty)	Poverty alleviation sector
<b>5</b>	Monitoring compliance with children's rights in Flanders	<i>Kinderrechtencommissariaat</i> (Children's Rights Commissioner of the Flemish Parliament)	Paraparliamentary institution of Flemish Parliament
<b>6</b>	Healthier citizens (obo Flemish Government)	<i>Vlaams Instituut Gezond Leven</i> (Flemish Institute for Healthy Living)	Knowledge Institution
<b>7</b>	Umbrella for pupils/students	<i>Vlaamse Scholierenkoepel</i> (umbrella organisation for Flemish schoolchildren)	Students secondary schools
<b>8</b>	Vulnerable children	<i>Enchanté vzw</i>	Civil society organisations
<b>9</b>	Parents Catholic education	<i>ouderkoepel VCOV</i> (umbrella organisation for parents' associations – Free education network)	Parents/caregivers
<b>10</b>	Parents Catholic education	<i>ouderkoepel VCOV</i> (umbrella organisation for parents' associations – Free education network)	Parents/caregivers
<b>11</b>	All Flemish funds	<i>Liberale Mutualiteit</i>	Health insurance fund
<b>12</b>	Experienced expert on poverty	<i>De Link Armoede</i> (association for experiencers of poverty)	Civil society organisations
<b>13</b>	Data > University of Ghent	<i>University of Ghent</i>	Knowledge Institution
<b>14</b>	Data	<i>Sciensano</i>	Knowledge Institution
<b>15</b>	Data > University of Ghent	<i>University of Ghent</i>	Knowledge Institution
<b>16</b>	Parents official education	<i>GO! Ouders</i> ((umbrella organisation for parents' associations - Official education network)	Parents
<b>17</b>	Policy expert	<i>Let us</i>	Civil society organisations
<b>18</b>	SF4Cproject: WSFA	<i>Rikolto</i>	Civil society organisations
<b>19</b>	SF4Cproject: cities of Leuven&Ghent	<i>Rikolto</i>	Civil society organisations
<b>20</b>	Facilitator	<i>Rikolto</i>	Multistakeholder facilitation





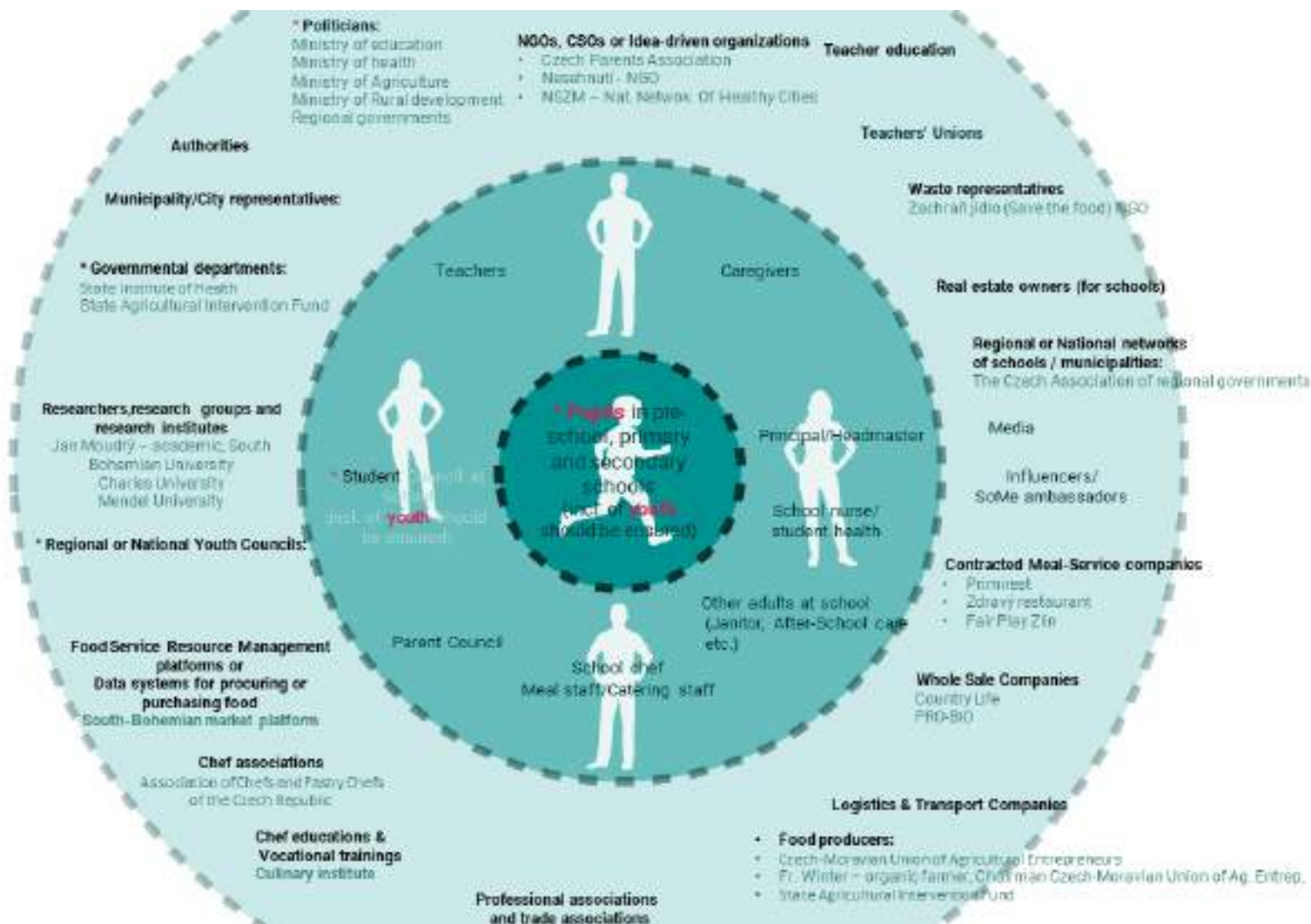


ANASTASIA LUNDQVIST

## SKUTEČNĚ ZDRAVÁ ŠKOLA/NLP FOR CZECH REPUBLIC

**D6.15 Stakeholder maps and delegate suggestions for national policy dialogues**

	<b>Role</b>	<b>Organization</b>	<b>Stakeholder segment</b>
<b>1</b>	Academic, project manager, influencer	South Bohemian university	Research, policy
<b>2</b>	Policy maker, public health expert	State Institute of Health	Policy, Authorities
<b>3</b>	Policy maker	Hradec Kralove regional government	Reg. governments
<b>4</b>	Influencer, agriculture policy advisor	Czech-Moravian Union of Agricultural Entrepreneur	Agr. association
<b>5</b>	Influencer, agriculture policy advisor	State Agricultural Intervention Fund	Policy, Authorities
<b>6</b>	Policy maker,	Ministry of Regional Development	Policy, Authorities
<b>7</b>	National government politician – Ministry of Agriculture	Ministry of Agriculture	Politician
<b>8</b>	Regional politician	Usti nad Labem Regional government	Politician
<b>9</b>	Influencer, Policy advisor	Czech Nat. Netwok. Of Healthy Cities	NGO, association
<b>10</b>	Influencer, agriculture policy advisor	Czech-Moravian Union of Agricultural Entrepreneur	Ag. association
<b>11</b>	Influencer, public figure	Czech-Moravian Union of Agricultural Entrepreneur	Farmer, leader of an NGO – sustainable agriculture
<b>12</b>	Local action group leader	Kopřivnice Local Action Group	Local Action Group
<b>13</b>	Regional politician	South Bohemia Regional Government	Politician
<b>14</b>	procurement officer	Primirest	Contractor – school food





ANASTASIA LUNDQVIST

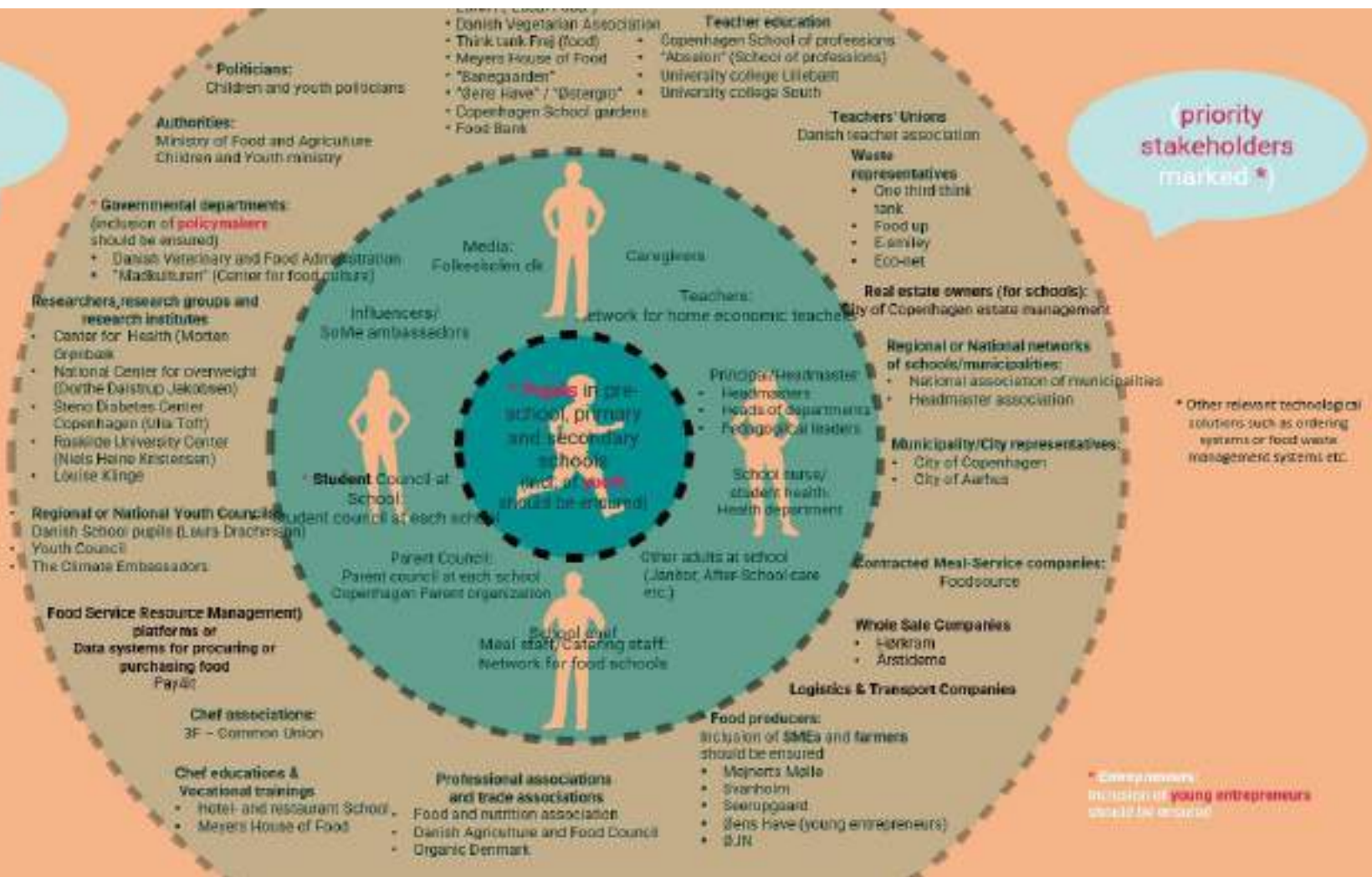
**Copenhagen Municipality/NLP for Denmark**

**D6.15 Stakeholder maps and delegate suggestions for national policy dialogues**

	<b>Role</b>	<b>Organization</b>	<b>Stakeholder segment</b>
1	Food expert	Food Denmark	Idea-driven organization
2	Researcher	UCL / LOMA	University / NGO
3	Researcher	RUC	University
4	Expert	Københavns Skolehaver	NGO
5	Expert	ØJN / Aarstiderne	Food producer
6	Expert	Eco-net	Waste repr.
7	Food supply	Københavns Kommune	Municipality repr.
8	Project manager	Aarhus Kommune	Municipality repr.
9	Expert	Fødevarerbanken	NGO
10	Authority	Fødevarestyrelsen	Authority
11	Authority	Madkulturen	Governmental dep.
12	Researcher	Københavns Universitet	University
13	Researcher	Steno Diabetes Center	Research institute
14	Youth representative	Danske Skoleelever	Youth
15	Youth representative	Afdeling for Bæredygtig udvikling / Klimaambassadørerne	Youth
16	Expert / NGO	Øens Have / Østergro	NGO
17	Consultant	Kost og ernæringsforbundet	Professional association
18	Consultant	Landbrug og Fødevarer	Professional association
19	Consultant	Meyers Madhus	Vocational training
20	Expert	Hotel- og restaurantskolen	Chef education

Adapt and fill out this template

(priority stakeholders marked \*)





ANASTASIA LUNDQVIST

**Stockholm Environment Institute (SEI) Tallinn/NLP for  
Estonia**

**D6.15 Stakeholder maps and delegate suggestions for national  
policy dialogues**

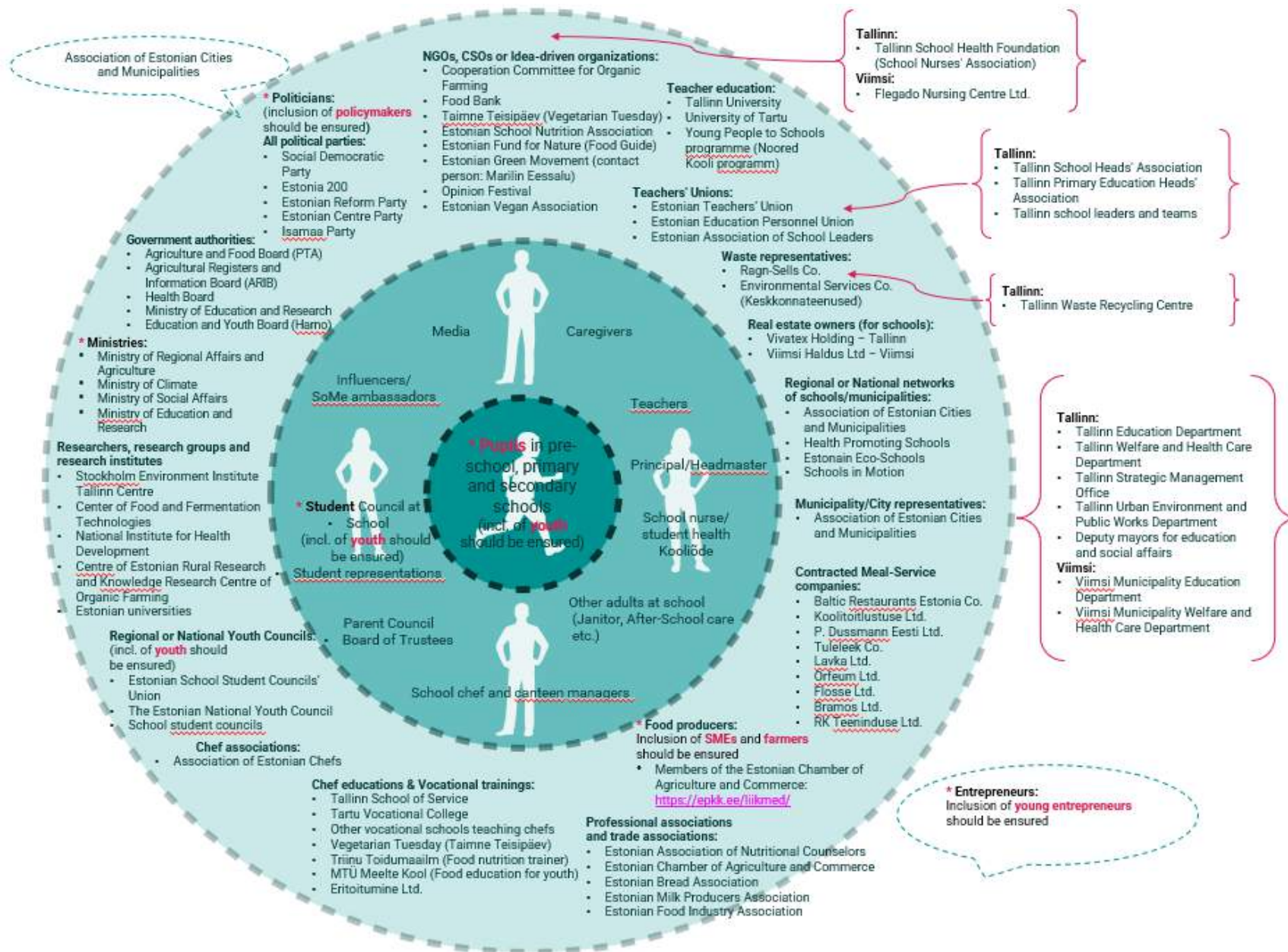
	<b>Role</b>	<b>Organization</b>	<b>Stakeholder segment</b>
1	School Programme Coordinator	Vegetarian Tuesday	NGO – vegetarian/vegan food organisation
2	“Clickis” Project Manager	Estonian Green Movement	Youth/Pupils
3	“Food Guide” Project Manager	Estonian Nature Fund	NGO – environment protection
4	CEO	Food Bank	NGO – food charity organisation
5	“Green School” Project Coordinator	Tartu Environmental Education Centre	NGO – environmental education organisation
6	CEO	Estonian School Food Association	NGO – school food organisation
7	Chairman of the Board	Tallinn School Healthcare	NGO – student health organisation
8	Program Manager	Opinion Festival	NGO – debate festival
9	Member of the Board	Estonian Vegan Association	NGO – vegan organisation
10	“Sapere” Method Expert	School of Senses	NGO – food education for youth/pupils
11	Board Member	Organic Estonia	NGO – supporting organic market
12	Member of Parliament	Estonian Social Democratic Party	Politicians
13	Member of Parliament	Estonia 200 Party	Politicians
14	Head of Plant Health Department (organic agriculture)	Ministry of Regional Affairs and Agriculture	Ministries
15	Green Public Procurement Advisor	Ministry of Climate	Ministries
16	Head of Public Health Department	Ministry of Social Affairs	Ministries
17	Head of State Schools Management	Ministry of Education and Research	Ministries
18	Head of Organic Agriculture Department	Agriculture and Food Board	Government Authorities
19	R&D Director, Food Science	Center of Food and Fermentation Technologies	Food research organisation
20	Head of Food and Movement Department	The National Institute for Health Development	Government Research Organisation



21	Specialist	Centre of Estonian Rural Research and Knowledge	Government Research Centre
22	Director	Research Centre of Organic Farming	Interdisciplinary Research Centre
23	Head of Food and Biotechnology Department	2 TALLINN UNIVERSITY OF TECHNOLOGY	University
24	Chairman of the Board	Estonian School Student Councils' Union	National Youth Council
25	Chairman of the Board	The Estonian National Youth Council	National Youth Council
26	Member of the Board	Association of Estonian Chefs	Chef Association
27	Member of the Board	Estonian Association of Nutritional Counselors	Professional Associations and Trade Associations
28	Head Teacher of Catering	Tallinn School of Service	Chef Education and Vocational Training
29	Headmaster	Tartu Vocational College	Chef Education and Vocational Training
30	Food Nutrition Trainer	Triinu Food World	Chef Education and Vocational Training
31	Food Nutrition Specialist	Eritoitumine Ltd.	Chef Education and Vocational Training
32	Manager	Estonian Food Industry Association	Professional Associations and Trade Associations/Food Producers
33	Food Area Manager	The Estonian Chamber of Agriculture and Commerce	Professional Associations and Trade Associations
34	Member of the Board	Organic Farming Cooperation Association	Professional Associations and Trade Associations
35	President	Estonian Bread Association	Professional Associations and Trade Associations
36	Chairman of the Council	Estonian Milk Producers Association	Professional Associations and Trade Associations
37	Managing Director	Baltic Restaurants Estonia Co.	Contracted Meal-Service Companies
38	-	Koolitoitlustuse Ltd.	Contracted Meal-Service Companies
39	Catering Manager	P. Dussmann Eesti Ltd.	Contracted Meal-Service Companies
40	-	Tuleleek Co.	Contracted Meal-Service Companies
41	Project Manager	Lavka Ltd.	Contracted Meal-Service Companies

42	-	Orfeum Ltd.	Contracted Meal-Service Companies
43	Manager	Flosse Ltd.	Contracted Meal-Service Companies
44	Manager	Bramos Ltd.	Contracted Meal-Service Companies
45	Manager	RK Teeninduse Ltd.	Contracted Meal-Service Companies
46	Deputy Director	Association of Estonian Cities and Municipalities	Regional or National Networks Municipalities
47	Head of the Department	Tallinn Education Department	Municipality/City Representatives
48	Head of the Department	Tallinn Welfare and Health Care Department	Municipality/Cityso Representatives
49	Head of the Department	Tallinn Urban Environment and Public Works Department	Municipality/City Representatives
50	Deputy Mayor (Education Department)	Tallinn City Government	Municipality/City Representatives
51	Deputy Mayor (Welfare and Health Care Department)	Tallinn City Government	Municipality/City Representatives
52	Head of Department of Education	Viimsi Municipality Education Department	Municipality/City Representatives
53	Head of Department	Viimsi Municipality Welfare and Health Care Department	Municipality/City Representatives
54	"Health-Promoting Schools" Project Manager	The National Institute for Health Development	Regional or National Networks of Schools
55	"Schools in Motion" Network Manager	Research Group of Physical Activity for Health at University of Tartu	Regional or National Networks of Schools
56	TBD	Vivatex Holding Ltd.	Real estate owners (for schools) – Tallinn
57	Administrative Manager of Schools	Viimsi Haldus Ltd.	Real estate owners (for schools) – Viimsi
58	Chairman of the Board	Ragn-Sells Co.	Waste Representatives
59	Chairman of the Board	Eesti Keskkonnateenused Co.	Waste Representatives

60	Member of the Board	Tallinna Jäätmete Taaskasutuskeskus Co.	Waste Representatives
61	Member of the Board	Estonian Teachers' Union	Teachers' Unions
62	Chairman of the Board	Education Personnel Trade Union	Teachers' Unions
63	Chairman of the Board	Estonian School Heads' Association	Teachers' Unions
64	CEO	Tallinn School Heads' Association	Teachers' Unions
65	Chairman of the Board	Tallinn Primary Education School Heads' Association	Teachers' Unions
66	Director of the School of Educational Sciences	Tallinn University	Teacher Education
67	Head of Education Institute	University of Tartu	Teacher Education
68	CEO	Youth to Schools	Teacher Education





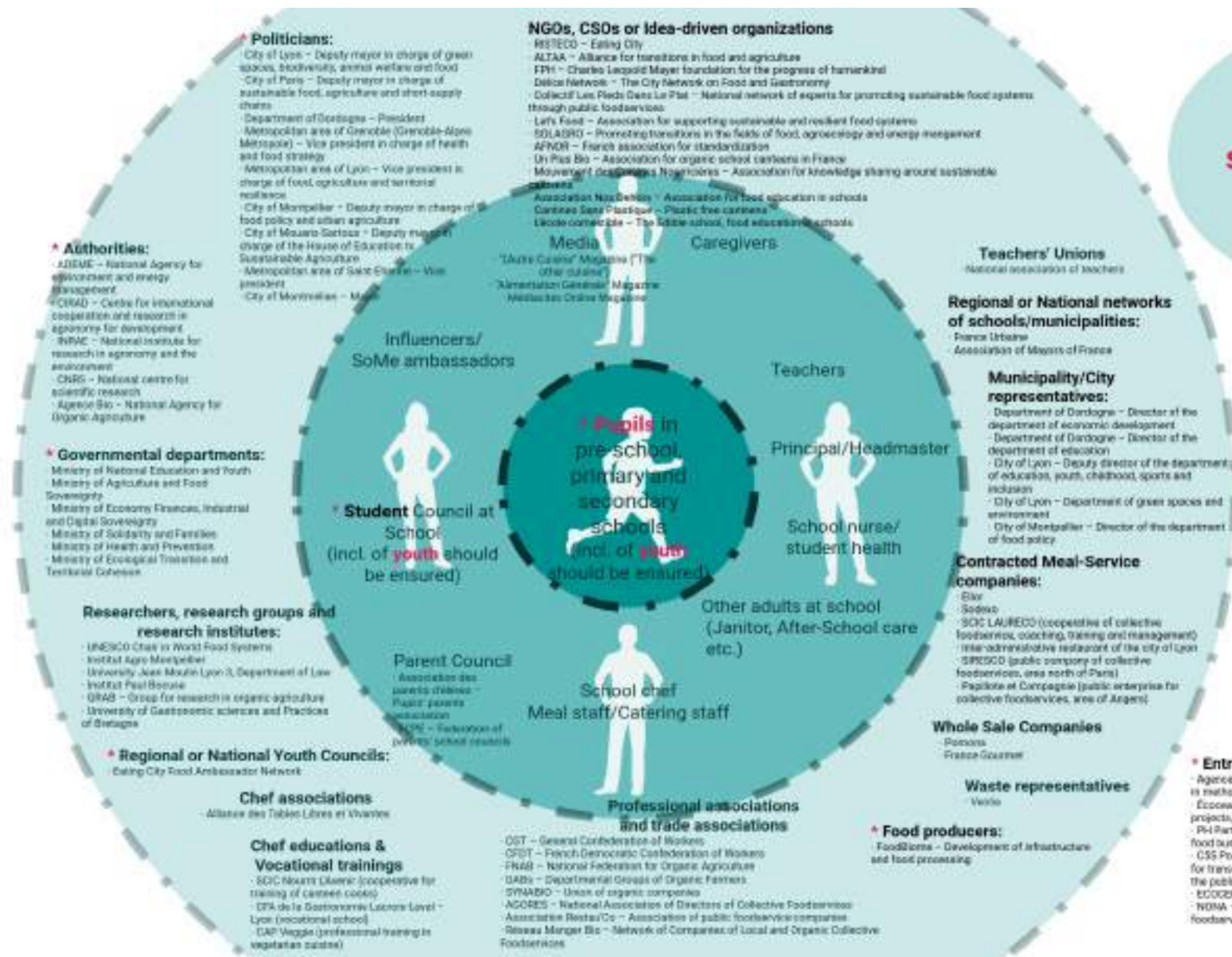
ANASTASIA LUNDQVIST

## Eating City (Risteco)/NLP for France

**D6.15 Stakeholder maps and delegate suggestions for national policy dialogues**

	<b>Role</b>	<b>Organization</b>	<b>Stakeholder segment</b>
1	Director	RISTECO – Eating City	NLP France
2	Project Manager	RISTECO – Eating City	NLP France
3	SF4C Food Ambassador for France	Eating City Food Ambassador Network	Regional or National Youth Councils
4	Deputy mayor in charge of green spaces, biodiversity, animal welfare and food	City of Lyon	Politicians (at local, regional, national level)*
5	Deputy mayor in charge of sustainable food, agriculture and short-supply chains	City of Paris	Politicians (at local, regional, national level)*
6	Vice president in charge of health and food strategy	Metropolitan area of Grenoble (Grenoble-Alpes Métropole)	Politicians (at local, regional, national level)*
7	Vice president in charge of food, agriculture and territorial resilience	Metropolitan area of Lyon	Politicians (at local, regional, national level)*
8	Deputy mayor in charge of food policy and urban agriculture	City of Montpellier	Politicians (at local, regional, national level)*
9	Deputy mayor in charge of the House of Education to Sustainable Agriculture	City of Mouans-Sartoux	Politicians (at local, regional, national level)*
10	Director	Department of Dordogne – Department of economic development	Municipality/City representatives*
11	Deputy director	City of Lyon – Department of education, youth, childhood, sports and inclusion	Municipality/City representatives*
12	Director	City of Montpellier – Department of food policy	Municipality/City representatives*
13	Researcher, socio-economist of food	CIRAD – Centre for international cooperation and research in agronomy for development	Authorities (Public agencies)*
14	Person in charge of collective foodservice	Agence Bio – National Agency for Organic Agriculture	Authorities (Public agencies)*
15	Chief of cabinet, special counsellor to the cabinet of the Minister Gabriel Attal	Ministry of National Education and Youth	Governmental Departments*

16	Professor	Institut Agro Montpellier	Researchers, research groups and research institutes
17	General director	SCIC Nourrir l’Avenir (cooperative for training of canteen cooks)	Chef education & vocational trainings
18	President	SYNABIO – Union of organic companies	Professional associations & trade associations
19	Director of services/ Project manager	AGORES – National Association of Directors of Collective Foodservices	Professional associations & trade associations
20	General director	FoodBiome – Development of infrastructure and food processing	Food producers*
21	Director	SCIC LAURECO, Coöperative of collective foodservices, coaching, training and management	Contracted meals-service companies
22	Expert in solidarity and social cohesion	France Urbaine – Network of cities	Regional or national networks of municipalities
23	Project manager Co-coordinator	SOLAGRO – Promoting transitions in the fields of food, agroecology and energy management ALTAA – Alliance for transitions in food and agriculture	NGOs, CSOs or idea-driven organisations
24	Director	FPH – Charles Leopold Mayer foundation for the progress of humankind	NGOs, CSOs or idea-driven organisations
25	Executive directors/ Project manager	Délice Network – The City Network on Food and Gastronomy	NGOs, CSOs or idea-driven organisations
26	Founders	Let’s Food – Association for supporting sustainable and resilient food systems	NGOs, CSOs or idea-driven organisations
27	Journalist	Magazine “L’autre cuisine”	Media
28	Independent journalist	-	Media
29	Consultant	Écoceaty – Consultancy in urban and territorial projects, evaluation of projects and research	Consultancy
30	Consultant and trainer	C5S Pour une Alimentation Durable – Consultancy for transitioning to sustainable and healthy food for the public and private sectors	Consultancy



**priority stakeholders marked \***

\* Other relevant technological solutions such as ordering systems or food waste management systems etc.

- Politicians:**
- City of Lyon – Deputy mayor in charge of green spaces, biodiversity, animal welfare and food
  - City of Paris – Deputy mayor in charge of sustainable food, agriculture and short supply chains
  - Department of Dordogne – President
  - Metropolitan area of Grenoble (Grenoble-Métropole) – Vice president in charge of health and food strategy
  - Metropolitan area of Lyon – Vice president in charge of food, agriculture and territorial resilience
  - City of Montpellier – Deputy mayor in charge of food policy and urban agriculture
  - City of Mouans-Sartoux – Deputy mayor
  - City of Moulins-la-Marche – Vice president
  - City of Montreuil – Mayor

- NGOs, CSOs or idea-driven organizations**
- RES'ECO – Eating City
  - ALTA – Alliance for transitions in food and agriculture
  - FPM – Charles Léopold Mayer foundation for the progress of humankind
  - Delice Network – The City Network on Food and Gastronomy
  - Collectif Les Pèdes Dans Le Plat – National network of experts for promoting sustainable food systems through public food services
  - LaFi Food – Association for supporting sustainable and resilient food systems
  - SOIASRO – Promoting transitions in the fields of food, agroecology and energy management
  - AFNOR – French association for standardization
  - Un Plus Bio – Association for organic school canteens in France
  - Mouvement des Citoyens Nourriciers – Association for knowledge sharing around sustainable canteens
  - Association Nos Déchets – Association for food education in schools
  - Cantine Sans Plastique – Plastic free canteens
  - L'école comestible – The edible school, food education in schools

- Authorities:**
- JDEME – National Agency for environment and energy management
  - CREAD – Centre for inspirational cooperation and research in agronomy for development
  - INRAE – National Institute for research in agronomy and the environment
  - CRIS – National centre for scientific research
  - Agence Bio – National Agency for Organic Agriculture

- Governmental departments:**
- Ministry of National Education and Youth
  - Ministry of Agriculture and Food Sovereignty
  - Ministry of Economy, Finance, Industrial and Digital Sovereignty
  - Ministry of Solidarity and Families
  - Ministry of Health and Prevention
  - Ministry of Ecological Transition and Territorial Cohesion

- Researchers, research groups and research institutes:**
- UNESCO Chair in World Food Systems
  - Institut Agro Montpellier
  - University Jean Moulin Lyon 3, Department of Law
  - Institut Paul Bocuse
  - ORAB – Group for research in organic agriculture
  - University of Gastronomic sciences and Practices of Brauges

- Regional or National Youth Councils:**
- Eating City Food Ambassador Network

- Chef associations**
- Alliance des Tablettes Libres et Vivantes

- Chef educations & Vocational trainings**
- SOC Nourris (Associative cooperative for training of career cooks)
  - CPA de la Gastronomie Lyonnaise Level – Lyon (vocational school)
  - CAP Veggie (professional training in vegetable cuisine)

- Professional associations and trade associations**
- CST – General Confederation of Workers
  - CFDT – French Democratic Confederation of Workers
  - FNAB – National Federation for Organic Agriculture
  - DABO – Departmental Groups of Organic Farmers
  - SYNABIO – Union of organic companies
  - AGORES – National Association of Directors of Collective Foodservices
  - Association Restau'Co – Association of public foodservice companies
  - Réseau Manger Bio – Network of Companies of Local and Organic Collective Foodservices

- Food producers:**
- FoodBioma – Development of infrastructure and food processing

- Whole Sale Companies**
- Poisons
  - France Gourmer

- Waste representatives**
- Veolia

- Contracted Meal-Service companies:**
- Elax
  - Sodexo
  - SOC LAURECO (cooperative of collective foodservices, coaching, training and management) inter-administrative restaurant of the city of Lyon
  - SIPESCO (public company of collective foodservices, area north of Paris)
  - Papilote et Compagnie (public enterprise for collective foodservices, area of Angers)

- Municipality/City representatives:**
- Department of Dordogne – Director of the department of economic development
  - Department of Dordogne – Director of the department of education
  - City of Lyon – Deputy director of the department of education, youth, childhood, sports and inclusion
  - City of Lyon – Department of green spaces and environment
  - City of Montpellier – Director of the department of food policy

- Regional or National networks of schools/municipalities:**
- France Urbaine
  - Association of Mayors of France

- Teachers' Unions**
- National association of teachers





ANASTASIA LUNDQVIST

## Speiseräume and the city of Essen/NLP for Germany

**D6.15 Stakeholder maps and delegate suggestions for national policy dialogues**

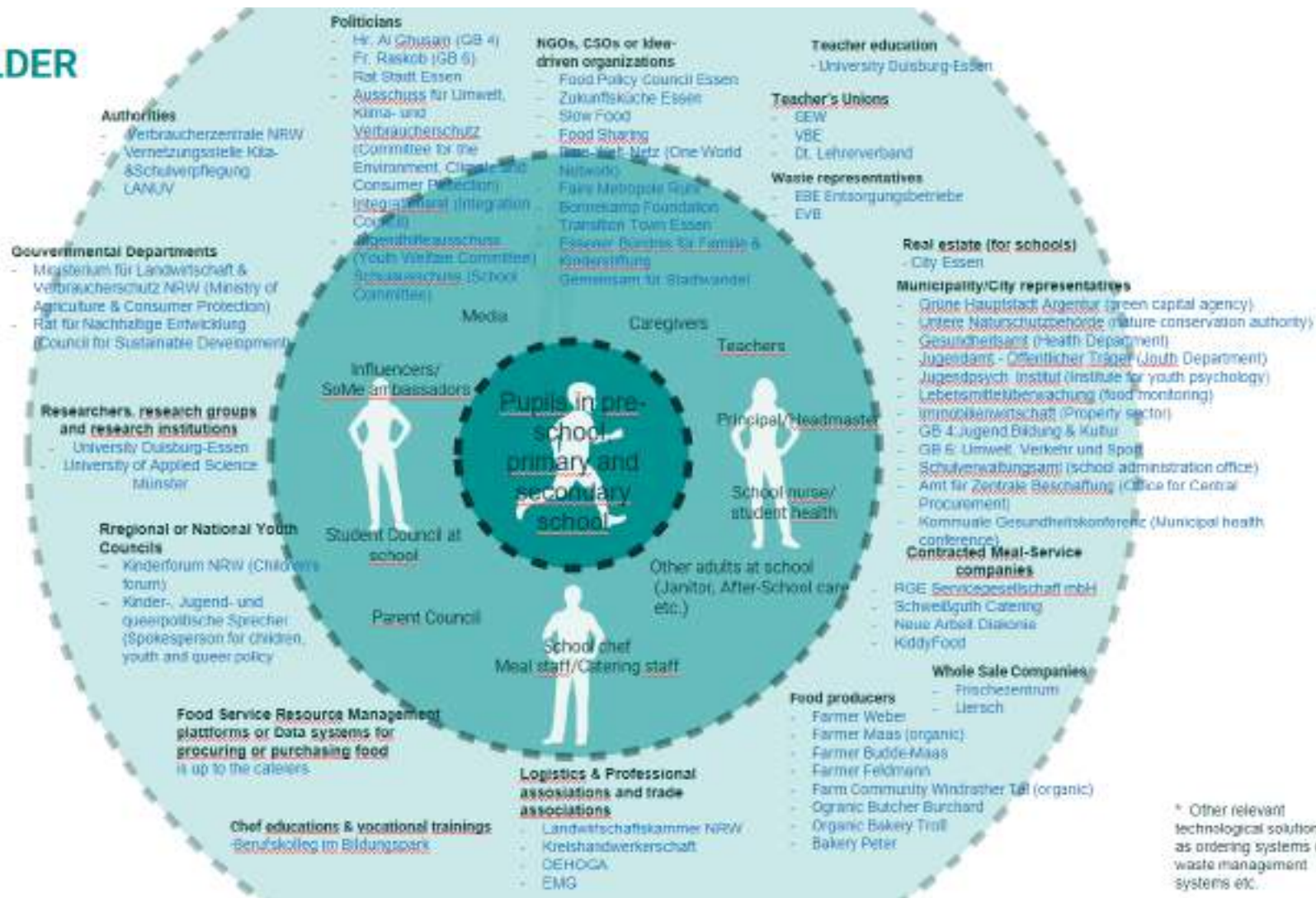
	<b>Role</b>	<b>Organization</b>	<b>Stakeholder segment</b>
<b>1</b>	Farmer & Chairman of the district farmers' association	<i>Farmer Weber, Oberschuirshof</i>	<i>Food producer/Farmer</i>
<b>2</b>	<i>Owner</i>	Troll Organic bakery	Food producer
<b>3</b>	<i>Representative/Spokesperson</i>	<i>Frischezentrum Großmarkt</i>	<i>Food Supplier</i>
<b>4</b>	Owner & Managing Director	Liersch	<i>Food Supplier</i>
<b>5a</b>	Managing Director	RGE	
<b>5b</b>	Kitchen director	RGE	<i>Caterer</i>
<b>5c</b>	Catering Manager	RGE	Caterer
<b>6</b>	<i>Head of Department</i>	<i>Neue Arbeit der Diakonie</i>	<i>Caterer</i>
<b>6a</b>	<i>Manager</i>	<i>Neue Arbeit der Diakonie</i>	<i>Caterer</i>
<b>7</b>	<i>Owner and Managing Director</i>	<i>Schweißguth Catering</i>	<i>Caterer</i>
<b>8</b>	<i>Owner and Managing Director</i>	KiddyFood	<i>Caterer</i>
<b>9</b>	Catering Manager	AWO	<i>Caterer</i>
<b>10</b>	Kitchen director	Uniklinikum Essen	<i>Caterer</i>
<b>11</b>	Managing Director	Vitaminreich (Organic Catering)	<i>Caterer</i>
<b>12</b>	Chairman Bonnekamp Stiftung	Bonnekamp Stiftung (Environmental education, organic gardening, permaculture)	NGO
<b>13</b>	Authority that runs vocational colleges and centres for further education and training in terms of farming, home economics and cooking	Landwirtschaftskammer NRW/Chamber of Agriculture	Public Authority (Corporation under public law)
<b>14</b>	Representative/Chair(wo)man -> Contact for organised trades in Essen	Kreishandwerkerschaft / District craftsmen's association	Public Authority (Corporation under public law)
<b>15</b>	<i>Representative/Spokesperson</i>	Denn`s Bioladen (Organic Supermarket)	<i>Food Saler</i>
<b>16</b>	<i>Representative/Spokesperson</i>	SuperBioMarkt (Organic Supermarket)	<i>Food Saler</i>
<b>17</b>	<i>Representative/Spokesperson</i>	Aldi	<i>Food Saler</i>
<b>18</b>	<i>Representative/Spokesperson</i>	Edeka	<i>Food Saler</i>
<b>19</b>	<i>Representative/Spokesperson</i>	Penny	<i>Food Saler</i>
<b>20</b>	<i>Representative/Spokesperson</i>	Rewe	<i>Food Saler</i>
<b>21</b>	<i>Representative/Spokesperson</i>	Lidl	<i>Food Saler</i>
<b>22</b>	<i>Representative/Spokesperson</i>	Wilma & Willi (Organic Food delivery service)	Food Saler

23	<i>Representative/Spokesperson</i>	Flotte Karotte (Organic Food delivery service)	Food Saler
24	<i>Representative/Spokesperson</i>	Netto	Food Saler
25	<i>Representative/Spokesperson</i>	DEHOGA German Hotel and Catering Association	Trade Association
26	<i>Representative/Spokesperson</i>	EVB Verwertungs- und Betriebs GmbH (responsible for and organises the weekly markets)	City administration (municipal subsidiary)
27	<i>Representative/Spokesperson</i>	EMG Essener Marketing GmbH	Marketing Company (Focus: city marketing)
28	<i>Representative/Spokesperson</i>	EBE Entsorgungsbetriebe	Waste disposal company
29	<i>Head of Green Capital Agency</i>	GHA	City administration
30	<i>Head of Department</i>	Untere Naturschutzbehörde	City administration
31	<i>Head of Department</i>	Gesundheitsamt (inkl. Kinder- und Jugendgesundheitsdienst)	City administration
32	<i>Head of Department</i>	Jugendamt - Öffentlicher Träger, Jugendhilfeplanung, Jugendhilfe	City administration
33	<i>Head of Department</i>	Jugendamt - Jugendpsychologisches Institut (JPI)	City administration
34	<i>Head of Department</i>	Lebensmittelüberwachung	City administration
35	<i>Head of Department</i>	Immobilienwirtschaft	City administration
36	<i>Mayor of Youth, Education &amp; Culture</i>	Geschäftsbereich 4: Jugend, Bildung und Kultur	City administration
37	<i>Mayor of Environment, transport and sports</i>	Geschäftsbereich 6: Umwelt, Verkehr und Sport	City administration
38	<i>Head of Department</i>	Schulverwaltungsamt	City administration
39	<i>Representative/Spokesperson</i>	Landesjugendamt LWL und LVR	Administration on Federal State level
40	<i>Head of Department</i>	Procurement	City administration
41	<i>Representative/Spokesperson</i>	SF4C Schools	Schools
42	<i>Representative</i>	Parents` Association SF4C Schools	Schools

43	<i>Representative</i>	<i>Students` Association SF4C</i> <i>Schools</i>	Schools
44	<i>Spokesperson</i>	Spokesperson for children, youth and queer policy (Green Party)	politics
45	<i>Representatives</i>	Rat der Stadt Essen	Politics on local level
46	<i>Representative/Spokesperson</i>	Berufskolleg im Bildungspark (Vocational College)	Vocational school
47	<i>Representative/Spokesperson</i>	Deutscher Lehrerverband (DL)	Teachers`Association
48	<i>Representative/Spokesperson</i>	Gewerkschaft Erziehung & Wissenschaft (GEW)	Labour Union
49	<i>Representative/Spokesperson</i>	Verband Bildung & Erziehung (VBE)	Professional Association Education & Training
50	<i>Representative/Spokesperson/Administration</i>	Kinderforum der Stadt Essen	City administration
51	Managing Director	Essener Bündnis für Familie & Kinderstiftung	NGO
52	Managing Director	Kommunale Gesundheitskonferenz	Public Health on city level
53	<i>Representative/Spokesperson</i>	Regionale Krankenkassen (Health Insurances): AOK, Barmer, TK,	Educational Programs, Public Health
54	<i>Professor of Education for Sustainable Development and Equal Opportunities Officer</i>	University Duisburg-Essen	Research/ higher education/ University
55	<i>Unit 6: Food Policy and Sustainable Consumption</i>	Ministerium für Landwirtschaft und Verbraucherschutz	Ministry/ political leaders
56	<i>Secretary General</i>	Rat für Nachhaltige Entwicklung	political leaders
57	<i>Professor for Food sensory analysis, sustainable product development, food law</i>	Fachhochschule Münster, Fachbereich Oecotrophologie	Research/ higher education/ University
58	<i>Food technologist</i>	Fachhochschule Münster, Fachbereich Oecotrophologie	Research/ higher education/ University

59	<i>Representative/Spokesperson</i>	Ernährungsrat Essen	NGO
60	<i>Representative/Spokesperson</i>	Zukunftsküche Essen	NGO
61	<i>Representative/Spokesperson</i>	Slow Food Essen	NGO
62	<i>Representative</i>	Food Sharing	NGO
63	<i>Representative/Spokesperson, Administration</i>	Transition Town Essen	NGO
64	<i>Project Manager</i>	Eine-Welt-Netz	NGO
65	<i>Specialist promoter of fair trade and sustainable business practices</i>	Eine-Welt-Netz	NGO
66	<i>Representative/Spokesperson</i>	Faire Metropole Ruhr	NGO
67	<i>Representative/Spokesperson, Administration School Food</i>	Verbraucherzentrale NRW – Vernetzungsstelle Kita- & Schulverpflegung	Authority
68	<i>Representative/Spokesperson, Administration</i>	Landesamt für Natur, Umwelt und Verbraucherschutz NRW (LANUV)	Authority
69	<i>Representative/Spokesperson</i>	Gemeinsam für Stadtwandel	Civic engagement network

# STAKEHOLDER MAPPING



\* Other relevant technological solutions such as ordering systems or food waste management systems etc.





ANASTASIA LUNDQVIST

**Speiseräume and the city of Nuremberg/NLP for Germany**

**D6.15 Stakeholder maps and delegate suggestions for national policy dialogues**

**Round table on the development of a school food strategy for the city of Nuremberg (Kick-off meeting)**

	<b>Role</b>	<b>Organization</b>	<b>Stakeholder segment</b>
<b>1</b>	Department for environment and health	city of Nuremberg	administration
<b>2</b>	Department for School and sport	city of Nuremberg	administration
<b>3</b>	Department for Youth, Family and Social Affairs	city of Nuremberg	administration
<b>4</b>	Department for Finance, Human Resources and IT	city of Nuremberg	administration
<b>5</b>	Department for School and sport	city of Nuremberg	administration
<b>6</b>	Department for environment and health – Bio-Metropolregion Nürnberg	city of Nuremberg	administration
<b>7</b>	Project Manager SF4C	city of Nuremberg	administration

**Second Meeting: School food strategy Nuremberg**

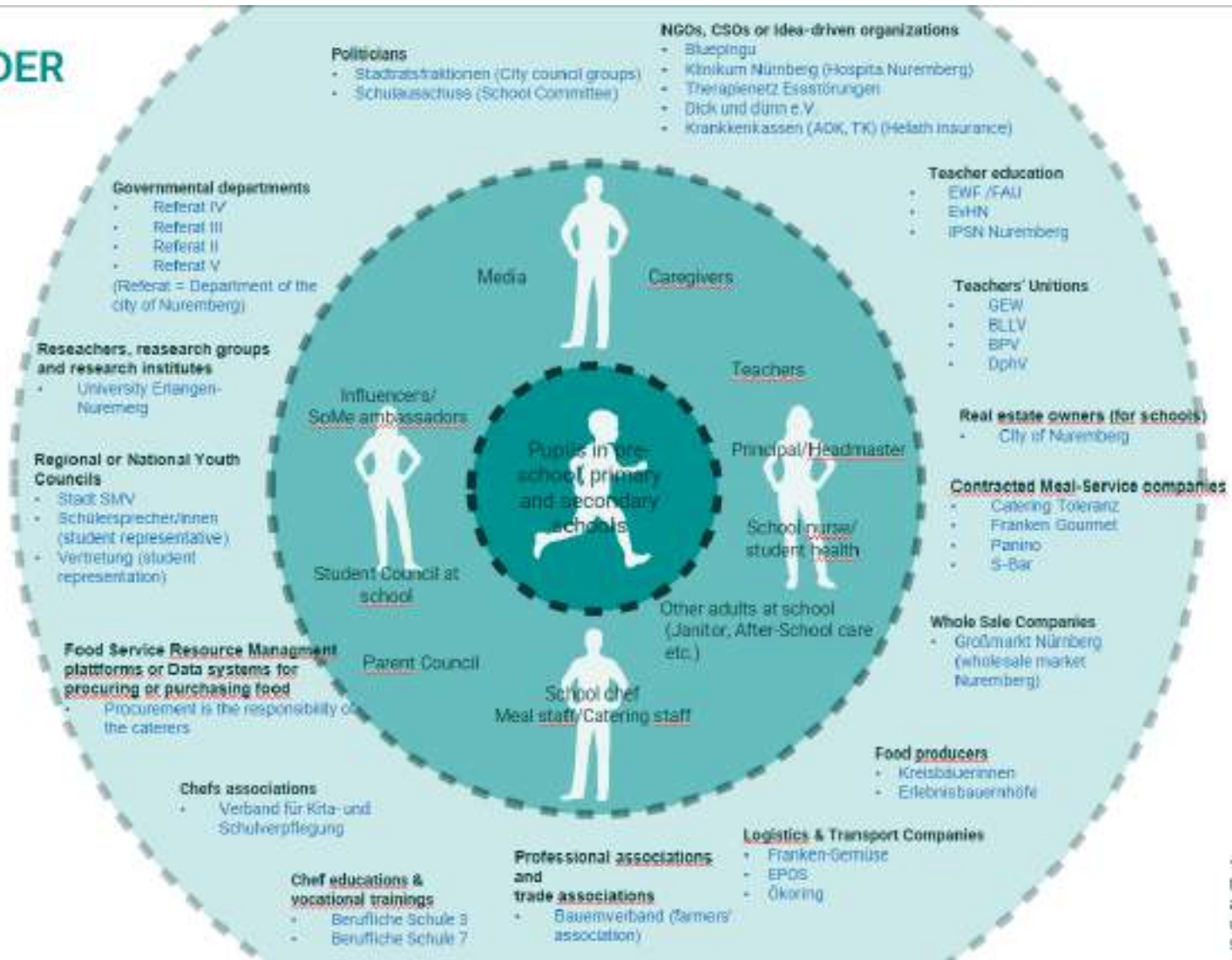
	<b>Role</b>	<b>Organization</b>	<b>Stakeholder segment</b>
<b>1</b>	Department for School and sport	city of Nuremberg	administration
<b>2</b>	Project Manager SF4C	city of Nuremberg	administration
<b>3</b>	Department for environment and health – Bio-Metropolregion Nürnberg	city of Nuremberg	administration
<b>4</b>	Department for School and sport	city of Nuremberg	administration
<b>5</b>	Department for School and sport	city of Nuremberg	administration



6	Manager	Caterin Toleranz	Caterer
7	Manager	Franken Gourmet	Caterer
8	Manager	Panino	Caterer
9	Manager	S-Bar	Caterer
10	Manager	Frankengemüse	Food Supplier
11	Manager	EPOS	Food Supplier
12	Manager	Ökoring	Food Supplier
13	Manager	Großmarkt Nürnberg	Food Supplier
14	Chair	Bauernverband	Local farming
15	Spokeswoman	1. Kreisbäuerin	Local farming
16	Spokeswoman	2. Kreisbäuerin	Local Farmin
17	Headmaster	Bertolt-Brecht-Schule	Schooladministrati on
18	Headmaster	Michael-Ende-Schule	Schooladministrati on
19	Headmaster	Mittelschule Schössleinsgasse	Schooladministrati on
20	Headmaster	Ludwig-Uhland-Schule	Schooladministrati on
21	Headmaster	Sigena-Gymnaisum	Schooladministrati on
22	Headmaster	Wirtschaftsschule	Schooladministrati on
23	Headmaster	B7	Schooladministrati on
24		B3	Schooladministrati on
25	Health Insurance	AOK	Educational Programms
26	Health Insurance	TK	Educational Programms

<b>27</b>	MD/ Pediatrician	Klinikum Nürnberg	Obesity Center Nuremberg
<b>28</b>	Department of Health	City of Nuremberg	Educational Support
<b>29</b>	Representative	Parents' Association Nuremberg	
<b>30</b>	Representative	Parents' Association Nuremberg	
<b>31</b>	Representative	Students' Association Nuremberg	Student of Neues- Gymnasium Nürnberg
<b>32</b>	Representative	Students' Association Nuremberg	Student of Thusnelda- Mittelschule Nürnberg
<b>33</b>	Representative	Students' Association Nuremberg	Student of B9
<b>34</b>	Representatives	Teachers	Teachers of SF4C Schools – Committee members
<b>35</b>	Department for Youth, Family and Social Affairs	city of Nuremberg	administration

# STAKEHOLDER MAPPING



\* Other relevant technological solutions such as ordering systems or food waste management systems etc.





ANASTASIA LUNDQVIST

## BESEF/NLP for Hungary

**D6.15 Stakeholder maps and delegate suggestions for national policy dialogues**

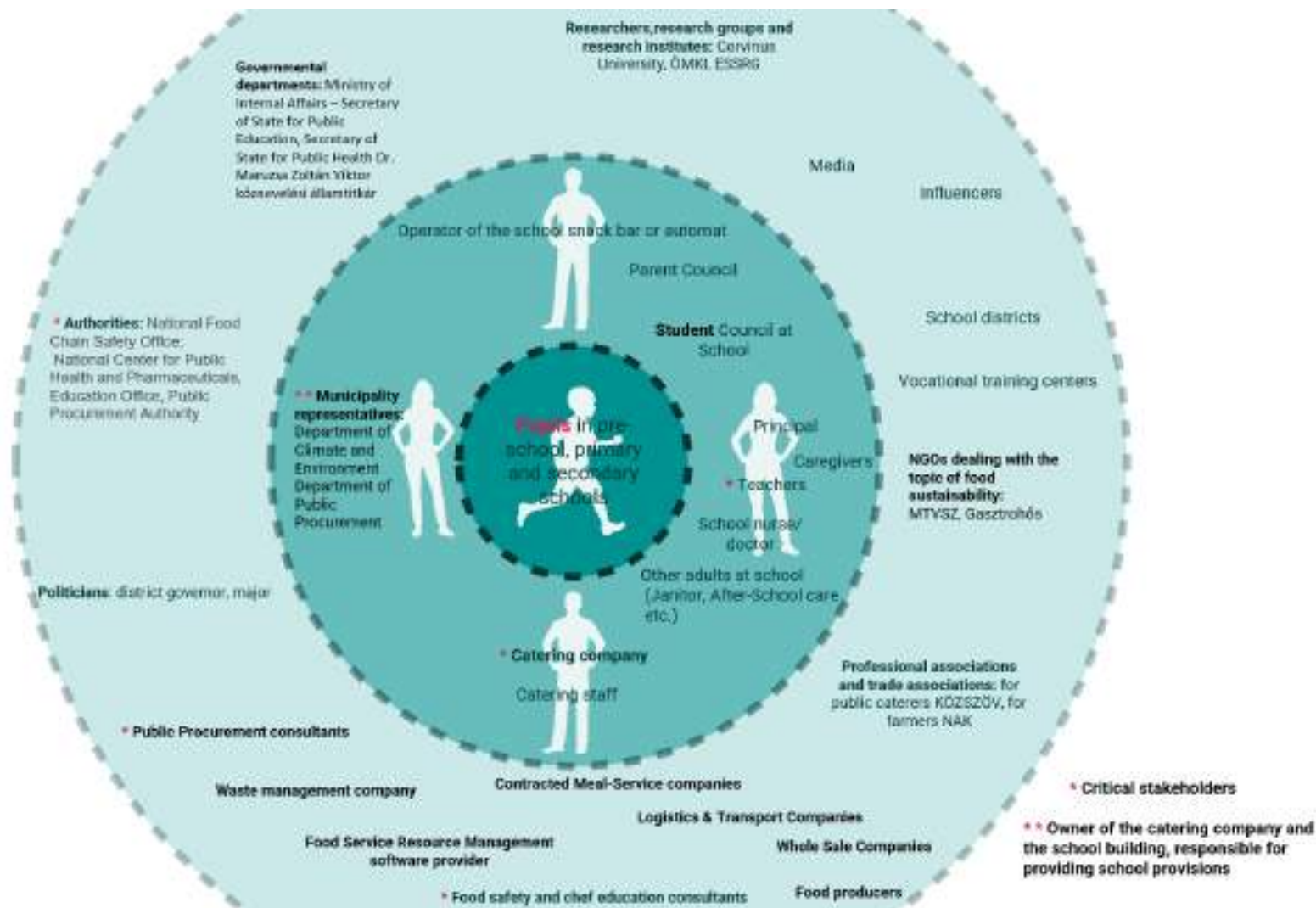
	Role	Organization	Stakeholder segment
1	Student representative	<i>School</i>	<i>Pupils</i>
2	School representative - management	School	Principal - Part of the school list
3	School representative - education	<i>School</i>	Teachers/Caregivers
4	Government representative - Health service	School	School nurse/doctor
5	School representatives	<i>School</i>	<i>Other adults at school</i>
6	Student representative	School	Student council
7	Parent representatives	<i>School</i>	Parent council
8	Entrepreneur	School	Operator of the snack bar
9	Director	ÉSZGSZ - Operating Organization for Catering	Catering company
10	Catering staff	ÉSZGSZ - Operating Organization for Catering	Catering staff
11	Responsible for the financial management of the schools	School district	<i>School districts</i>
12	Responsible for the financial management of the schools	<i>Vocational training centers</i>	<i>Vocational training centers</i>
13	Runs campaigns about sustainable food and provides sustainable restaurant certification - Will support the work of students by developing a curriculum about food sustainability for teachers and hosting a workshop for them	Felelős Gasztrohós	NGOs dealing with food sustainability
14	Association of public caterers	KÖZSZÖV	Professional Associations
15		HUNGAST	Contracted Meal-Service Provider

16		TBN	Logistics&transport company
17		TBN	Wholesale company
18		Difficult to track back	Food Producers
19		INDERE Kft	Food Safety and Chef Education Consultants
20		Quadro Byte Zrt	Food Service Software Provider
21	Taking care of the waste throughout the value chain - more different service providers	MOHU, Biofilter	Waste management company
22	Supporting ÉSZGSZ in PP tendering	Independent	Public Procurement Consultants
23	Raising awareness about school food provisions, checking quality, communicating with parents	Different parties	Politicians
24	Checking catering service providers for operations safety	National Food Chain Safety Office	Authorities
25	Umbrella organization	Ministry of Internal Affairs	Governmental Departments
26	They take part in developing the food startegy of Budapest within the FOODCLIC project	ESSRG	Researchers, groups, institutes
27	They wrote an article series about school food meals and systemic problems	Telex	Media
28	Raises awareness about food sustainability with artistic approach	Trafó	Influencer/Food Ambassador
29	Determines the framework rules for the management of school district centers, as well as organizes, manages and controls the finances of school district centers		Klebensberg Center

30	Runs a campaign about 1 Meat-free Day and provides educational materials for teachers and workshops for students	MTVSZ - Hungarian Association of Nature Protection	NGOs dealing with food sustainability
31	Runs campaigns about sustainable food and provides sustainable restaurant certification	Felelős Gasztrohős	NGOs dealing with food sustainability
32	They provide colling machines for the leftover food at the serving kitchens and distribute it to charity organizations	Élelmiszerbank/Food Bank Hungary	NGOs dealing with food sustainability
33	Develop public health and school provision dietary guidelines	National Center for Public Health and Pharmaceuticals	Authorities
34	They are responsible for setting school curriculum centrally in Hungary	Education Office	Authorities
35	They are responsible for legally sound PP procedures, check the ÉSZGSZ regularly in tendering	Public Procurement Authority	Authorities
36	Secretary of State for Education	Ministry of Internal Affairs	Governmental Departments
37	Secretary of State for Public Health	Ministry of Internal Affairs	Governmental Departments
38	Department of Climate and Environment	Budapest Majors Office	Municipality representatives
39	Department of Public Procurement	Budapest Majors Office	Municipality representatives
40	Responsible for research and awareness raising about organic farming	ÖMKI	Researchers, groups, institutes
41	Responsible for food network research, and PP research	Corvinus University of Budapest	Researchers, groups, institutes

42	Representing farmers	NAK - Hungarian Farmers Association	Professional Associations
43	School representative - management	Arany János Technical Secondary School and Vocational School of Mechanical Engineering SZC Budapest	Principals of the schools catered by ÉSZGSZ
44	School representative - management	Bánki Donát Technical College and Vocational School of Transport Engineering of the Budapest School of Mechanical Engineering	Principals of the schools catered by ÉSZGSZ
45	School representative - management	Békésy György Vocational School of the Budapest School of Economics	Principals of the schools catered by ÉSZGSZ
46	School representative - management	Budapest School of Economics Berzeviczy Gergely Gergely Bilingual Secondary School of Economics	Principals of the schools catered by ÉSZGSZ
47	School representative - management	Bláthy Ottó Titusz Titusz Technical Technical College of Budapest	Principals of the schools catered by ÉSZGSZ
48	School representative - management	Bolyai János Technical Secondary School and College of Budapest University of Technology	Principals of the schools catered by ÉSZGSZ
49	School representative - management	Budai Középiskola	Principals of the schools catered by ÉSZGSZ
50	School representative - management	Budapest Complex SZC Dobos C. József Vocational School	Principals of the schools catered by ÉSZGSZ







ANASTASIA LUNDQVIST

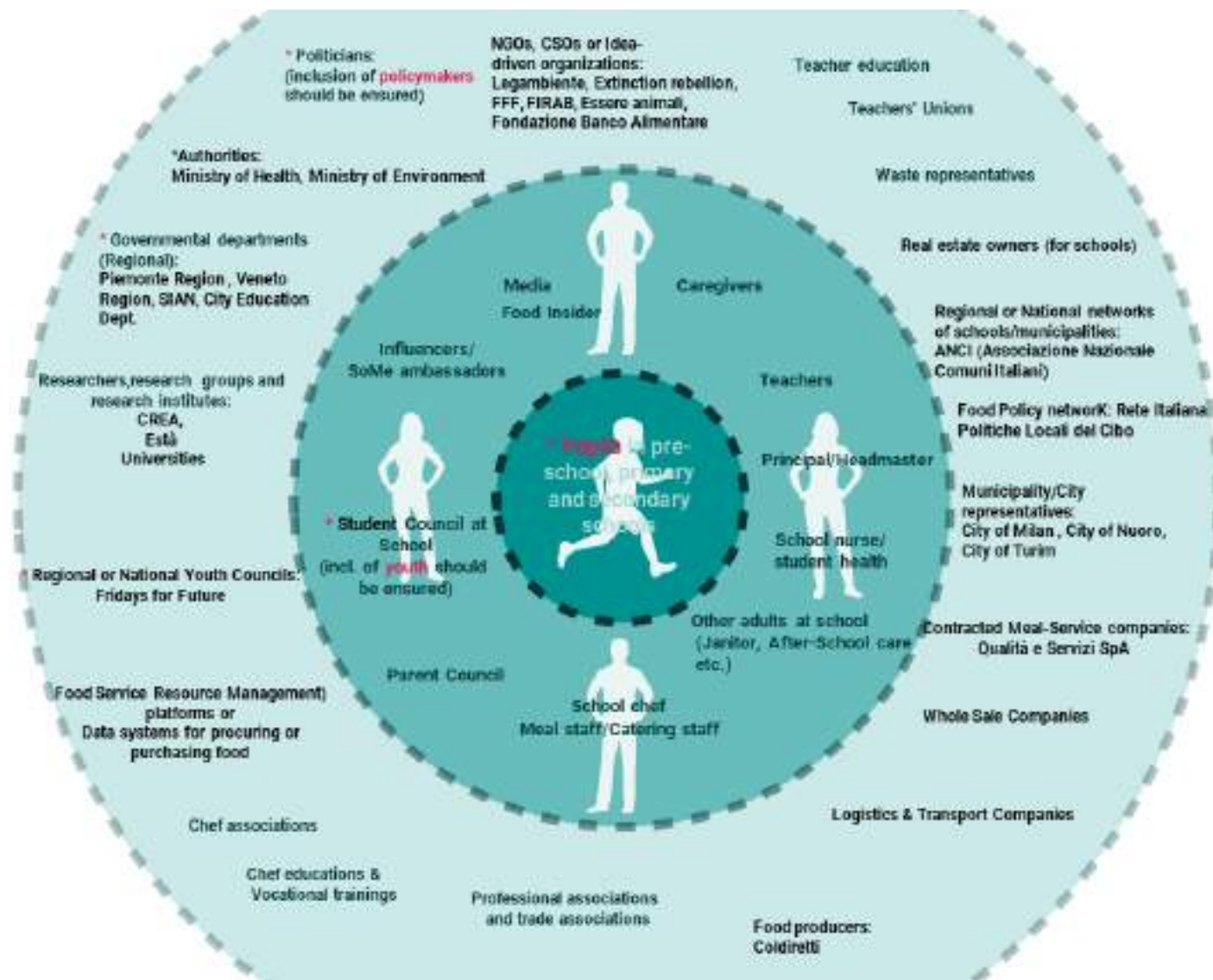
**Fondazione Ecosistemi/NLP for Italy**

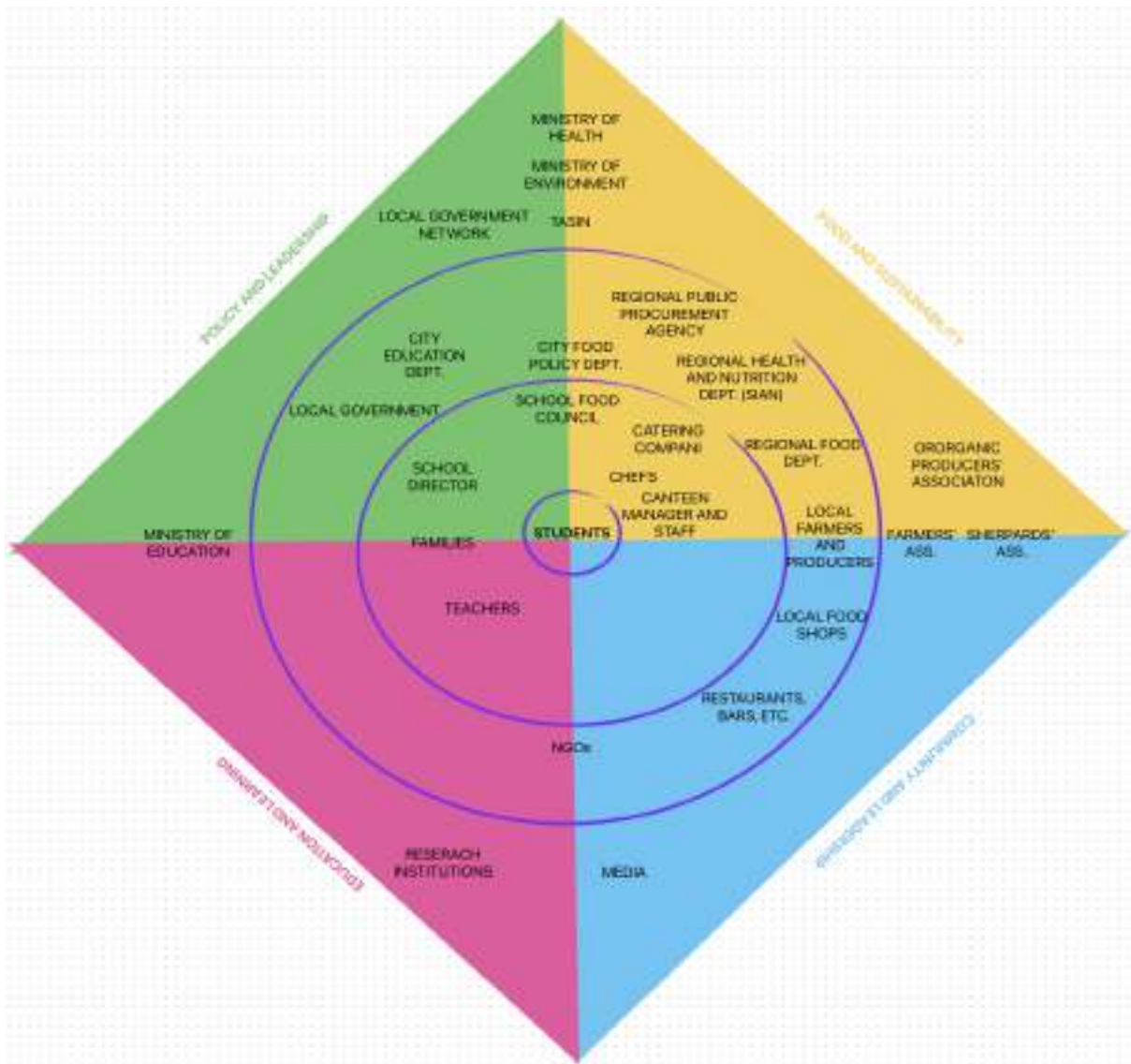
**D6.15 Stakeholder maps and delegate suggestions for national policy dialogues**

	Role	Organization	Stakeholder segment
1	Urban Food Enabler, Nuoro	Municipality of Nuoro	City Education Department
2	Municipal Councillor for Education and Social Affairs, Nuoro	Municipality of Nuoro	City Education Department
3	Urban Food Enabler, Milan	City of Milan	City Education Department
	Director of Food Policy Dept., Milan	City of Milan	City Food Policy Dept.
4	Responsible Quality and Food Safety	Milano Ristorazione	Catering Company
5	Students' representative, Nuoro	tbd	tbd
6	Students' Representative, Milan	tbd	tbd
7	tbd	Azienda di ristorazione Nuoro	Catering Company
8	Spokesperson	Fridays for Future Italia	Students
9	tbd	Extinction Rebellion Italia	NGO
10	Scientific Responsible	Legambiente	NGO
11	Owner and Director	Food Insider	Media
12	tbd	Foodbusters	NGO
13	Researcher, Food expert	Fondazione ANCI	Local Government Network
14	Researcher, Food expert	CREA	Research Institution
15	Researcher, Food expert	EsTA'	Research Institution
16	Researcher, Food expert	FIRAB	Organic Producers' Association
17	General Secretary	Fondazione Banco Alimentare	NGO
18	CEO	Qualità e Servizi SpA	Catering Company
19	Food policy expert	Slow Food Roma	NGO
20	Board Member	Terra!	NGO
21	Professor (food policies)	Università del Molise	Research Institution

22	Professor (sustainable agriculture)	Università di Firenze	Research Institution
23	Coordinator of Sustainable Universities Network (RUS)	Università di Torino	Research Institution
24	Professor (evaluation of public policies, nudge, food policies)	Università di Padova	Research Institution
25	Professor (sustainable and social agriculture)	Università di Perugia	Research Institution
26	Professor (Agriculture, Food and Environment)	Università di Pisa	Research Institution
27	Professor (sustainable food systems)	Università di Urbino	Research Institution
28	Officer	Regione Veneto	Regional Public Procurement Agency
29	Officer (Food Policy)	Regione Piemonte	Regional Food Dept.
30	Spokeperson	Essere Animali	NGO
31	President	Agricoltrura Capodarco	Small farmers and local producers
32	Project manager (Fusilli)	Risorse per Roma	Citry Food Policy Dept.
33	tbd	Coldiretti	Farmers' Association
34	tbd	CIA	Farmers' Association
35	tbd	tbd	Sherphards' Association
36	tbd	SIAN	Regional Health and Nutrition Dept.
37	GPP Officer	MASE	Ministry of the Environment
38	GPP Officer	MASE	Ministry of the Environment
39	TASIN	Ministero della Salute	Ministry of Health

Italy







ANASTASIA LUNDQVIST

## SKUTEČNĚ ZDRAVÁ ŠKOLA/NLP FOR SLOVAKIA

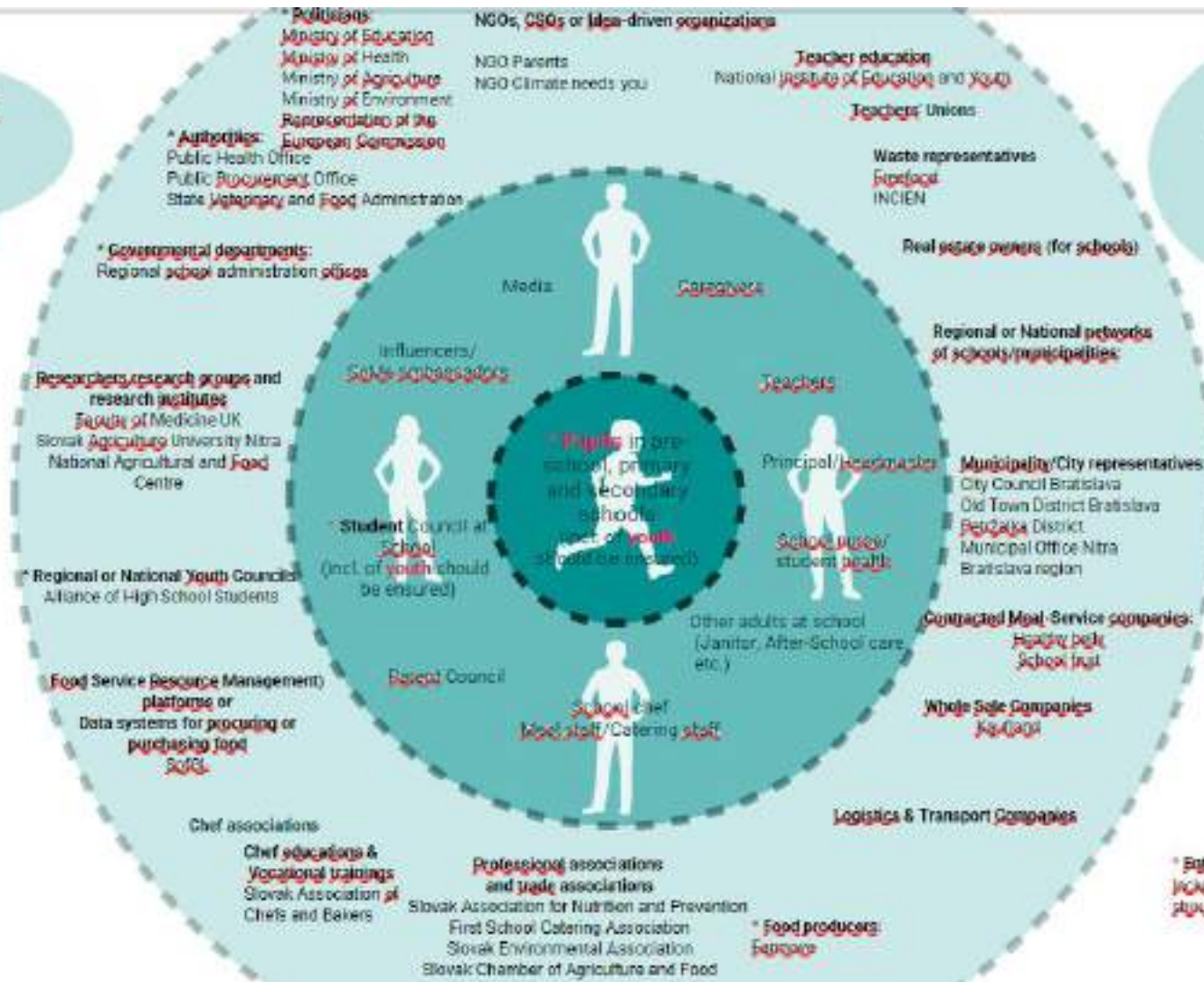
**D6.15 Stakeholder maps and delegate suggestions for national policy dialogues**

	Organization	Stakeholder segment
1	<i>Farmove</i>	<i>Farmer</i>
2	<i>Kaufland</i>	<i>Wholesale</i>
3	NGO Parents	NGO
4	State Institute of Health	Policy, Authorities
5	Climate needs you	NGO
6		<i>Influencer</i>
7	SoftGL	Food software
8	Bratislava – Old town	Politician
9	Bratislava region	Regional gov.
10	Zdravé bruško	Meal service company
11	Alliance of High School Students	<i>Youth association</i>
12	Slovak Agriculture University Nitra	<i>Research institute/University</i>
13	Ministry of Education	Politician
14	Education Committee of the National Assembly of the Slovak Republic	Politician
15	First School Catering Association	Professional Association
16	State Veterinary and Food Administration	Authority
17	Slovak Association for Nutrition and Prevention	Professional Association
18	Slovak Association for Nutrition and Prevention	Professional Association
19	Slovak Environmental Association	Professional Association
20	Slovak Chamber of Agriculture and Food	Authority
21	School fruit (Ministry of Education)	Meal programme
22	National Institute of Education and Youth	Teacher education
23	Public Procurement Office	Authority
24	Public Procurement Office	Authority
25	Public Health Office	Authority
26	Public Health Office	Authority
27	Public Health Office	Authority
28	European Comision representative	Politician



**Adapt and fill out this template**

**English template (with priority stakeholders marked \*)**



\* Other relevant technological solutions such as ordering systems or food waste management systems etc.

\* Foreign companies: inclusion of youth stakeholders should be prepared



ANASTASIA LUNDQVIST

## Mensa Civica/NLP for Spain

**D6.15 Stakeholder maps and delegate suggestions for national policy dialogues**

	Role	Organization	Stakeholder segment
1	NLP	Mensa Cívica	NGO
2	NLP	Mensa Cívica	NGO
3	General Director of Public Health	Region of Valencia (Health department)	Administration
4	Responsible of Health Education	Region of Valencia (Health department)	Administration
5	General Director of Educational Centers	Region of Valencia (Education department)	Administration
6	Responsible of school food public procurement	Region of Valencia (Education department)	Administration
7	Urban Food Enabler	Region of Valencia (Education department)	Administration
8	General Director of Rural Development	Region of Valencia (Agriculture department)	Administration
9	Manager of the Service of Organic Production	Region of Valencia (Agriculture department)	Administration
10	Technical Officer of the Service of Organic Production	Region of Valencia (Agriculture department)	Administration
11	Local councils for children and adolescents	Region of Valencia (Social Services)	Administration
12	Food Ambassador	World Sustainable Urban Food Centre of València	
13	Cook	InturFood	Catering company
14	Cook	Freelance	
15	Senior researcher	University of Alcala de Henares	Academic
16	Project coordinator of the SF4C	University of Alcala de Henares	Academic
17	Responsible of the kindergarten department	City of Madrid	Administration
18	Civil servant of the kindergarten department	City of Madrid	Administration

19	Responsible for kindergarten	City of Zaragoza	Administration
20	Education Adviser	City of Zaragoza	Administration
21	Senior sustainable food officer	City of València	Administration
22	Senior sustainable food officer	City of València	Administration
23	Senior sustainable food officer	City of Barcelona - Sustainable Food and Responsible Consumption Section	Administration
24	Senior researcher	University of Alcalá / Observatory on Public Procurement	Academic
25	Senior researcher	University of Alcalá / Observatory on Public Procurement	Academic
26	President	Spanish Confederation of Pupils' Parents' Associations (Confederación Española de Asociaciones de Padres y Madres del Alumnado, CEAPA)	Association
27	President	Spanish Academy of Nutrition and Dietetics	Academic
28	President	Centre for Rural and International Agricultural Studies (Centro de Estudios Rurales y de Agricultura Internacional, CERAI)	NGO
29	Project officer in the area of education	Centre for Rural and International Agricultural Studies (Centro de Estudios Rurales y de Agricultura Internacional, CERAI)	NGO
30	Director	Consumers and Users Confederation (Confederación de Consumidores y Usuarios, CECU)	NGO
31	Responsible of International Projects Area	Ecovalia (Ecological Value Association)	NGO

32	Director in the area of food and agriculture	WWF Spain	NGO
33	Project officer in the area of food and agriculture	WWF Spain	NGO
34	Director	Food Justice (Veterinarians Without Borders) - (Justicia Alimentaria, Veterinarios Sin Fronteras)	NGO
35	Project coordinator	Network of municipalities for agroecology	NGO
36	Director	Espigoladors Foundation	NGO
37	Project officer	GAP Spain	NGO
38	Coordinator	Eccomedores Extremadura Project	NGO
39	Coordinator	Quality Public School Canteen Platform	NGO
40	President	Spanish Association of Organic Producers and Marketers (Asociación Española de Productores y Comercializadores Ecológicos, Asobio)	Association





ANASTASIA LUNDQVIST

**WWF Sweden/NLP for Sweden**

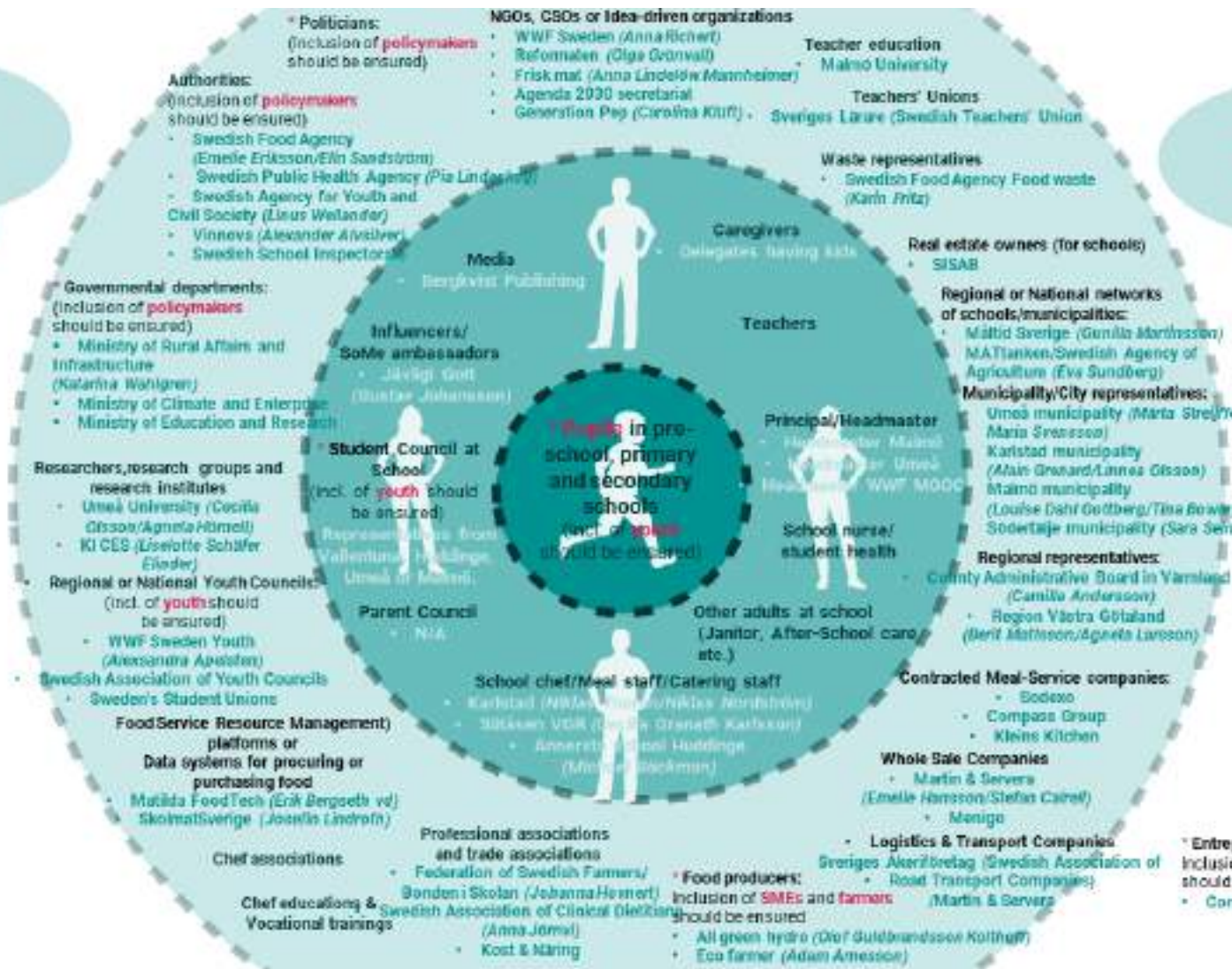
**D6.15 Stakeholder maps and delegate suggestions for national policy dialogues**

	Role	Organization	Stakeholder segment
1	Director	Reformaten	NGO
2	Director	Frisk mat	Idea driven org.
3	Director	Generation Pep	NGO/Foundation
4	Project manager	Livsmedelsverket/Swedish Food Agency	Authorities
5	Public health expert	Folkhälsomyndigheten/Public Health Agency	Authorities
6	Expert	Myndigheten för ungdoms- och civilsamhällesfrågor/Swedish Agency for Youth and Civil Society	Authorities
7	Area manager Sustainable Food Systems	Vinnova – Swedish Innovation Agency	Authorities
8	Expert	Skolinspektionen/Swedish Schools Inspectorate	Authorities
9	Project manager	Tillväxtverket/ Swedish Agency for Economic and Regional Growth	Authorities
10	Project manager	Jordbruksverket, MATtanken / Swedish Agency of Agriculture	Authorities
11	Ministerial Councillor	Landsbygds- och infrastrukturdepartementet/Ministry of Rural Affairs and Infrastructure	Policy makers
12	Researcher	Umeå University	University
13	Researcher/Project manager	Karolinska University / SkolmatSverige	University / Platform and data systems
14	Youth representative	WWF Sweden Youth	Youth
15	Youth representative	WWF Sweden Youth	Youth
16	Youth representative	Sveriges Ungdomsråd/The Swedish Association of Youth Councils	Youth
17	Youth rep./comms manager	Sveriges Elevkårer/Sweden's Student Unions	Youth
18	Student	Vallentuna municipality	Youth
19	Student	Vallentuna municipality	Youth
20	Dean	Upplands Väsby municipality	Principal/Headmaster
21	CEO	Matilda FoodTech	Data systems/Entrepreneurs



<b>22</b>	Project manager	Bonden i Skolan/LRF (Farmer in School/The Federation of Swedish Farmers	Farmers
<b>23</b>	Vice-president	Dietisternas Riksförbund/The Swedish Association of Clinical Dietitians	Professional association
<b>24</b>	Head of Sustainability	Martin & Servera	Wholesale company
<b>25</b>	Project manager	Måltid Sverige (Meal Sweden)/Skolmatsakademin (School meals academy)	Regional/National networks
<b>26</b>	School Chef	Annersta school, Huddinge municipality	School chef/ Meal staff
<b>27</b>	Meal manager	Umeå municipality	Municipality rep.
<b>28</b>	Project manager sustainability	Malmö municipality	Municipality rep.

**Swedish Stakeholder map**



(Priority stakeholders marked \*)

\* Other relevant technological solutions such as ordering systems or food waste management systems etc.

\* Entrepreneurs: Inclusion of **young entrepreneurs** should be ensured  
 \* Consupedia (Fredrik Broomeus)

**THANKS FOR  
THE FOOD!**



**It's time for  
a new menu**

[info@schoolfood4change.eu](mailto:info@schoolfood4change.eu)

[www.schoolfood4change.eu](http://www.schoolfood4change.eu)

#SchoolFood4Change



This project has received  
funding from the European  
Union's Horizon 2020 research  
and innovation programme  
under grant agreement  
No 101036763.



The sole responsibility for the content lies with the SchoolFood4Change project partners. The content does not necessarily reflect the opinion of the European Commission. The European Commission is also not responsible for any use that may be made of the information contained therein.